

Room to
live.

Full House

2021



D RV
Luxury Suites





JX450 - Columbian Maple Cabinets
with Invoke Décor
and Pebble Furniture

Destination anywhere.

Full House is built on the foundation of a Mobile Suite, it is built to be used, traveled with, and lived in! So gather your assets, start your adventure, and enjoy true luxurious full-time living with your new Full House.

Full-time living requires several items most toy haulers tend to ignore, but we put an emphasis on ensuring each floor plan offers a spacious kitchen with residential appliances, and functional storage.





Full House

JX450



Luxury from the word go.

The JX450 boast a full residential kitchen with tons of storage, solid surface countertops, full dinette, theater seating, and 55" TV entertainment center.

All Full House models feature a standard vanity slide providing more room in front of the bed. Each master suite offers excellent storage capabilities that include a walk-in closet with cedar lining and full underbed storage.







MX450 - Hazelnut Cabinets with Invoke Décor and Slate Furniture

The Foundation of Luxury.

The newest floorplan to the Full House line is the MX450 featuring our first ever 13 foot garage, accommodating the larger toys without compromising on full time amenities. The completely finished heated and cooled garage, means that you have a large open space with endless opportunities to fill it to suit your lifestyle. Perfect for your toys, home office, bunkroom for the kids, or whatever your needs are for more space, Full House has you covered.



Full House



Full House

MX450

Featured in the MX450 is a full residential kitchen, large entertainment center with opposing theater seat and additional love seat to accommodate guests. The standard master suite DRV continues to provide is featured in the upper deck with the cedar lined closet, king sized bed with overhead storage, and vanity slide allowing for extra walk around space. A large bathroom is easily accessible from the entry door, and features a washer and dryer connection, meaning the laundry doesn't have to be done in the garage.





Full House

GARAGE FEATURES



Luxury asset hauler.

The Full House takes the typical toy hauler garage to the next level. Every model comes standard with custom metal cabinetry, a 50" TV, and diamond plate accents throughout.

The optional patio enclosure is a popular choice. You can also add electric drop down beds, jack knife sofas, and a three season patio enclosure.



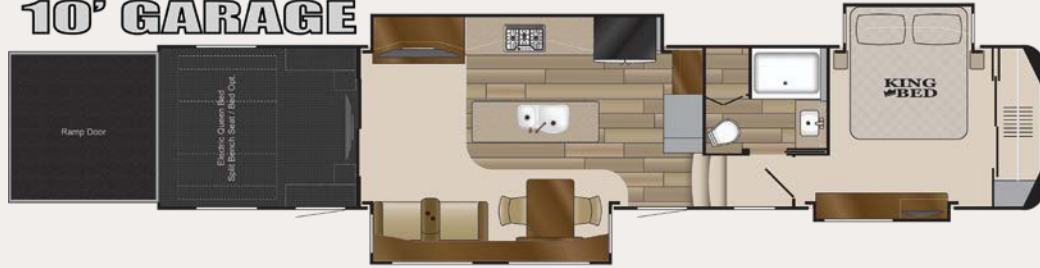
Floor Plans

- Goodyear 17 1/2" H-Rated Tires
- 8,000 lb. Rated Axles (triple axle models)
- Heavy Duty 9,000 lb. Axles (tandem axle models)
- Fresh Tank - 100 gal.
- Gray Tank - 75 gal.
- Black Tank - 50 gal.
- Hot Water Heater - 12 gal.
- Automotive Disc Brakes

All models feature

JX450

10' GARAGE



10' Garage
44' 2" Length
20,310 UVW
24,000 GVWR

LX455

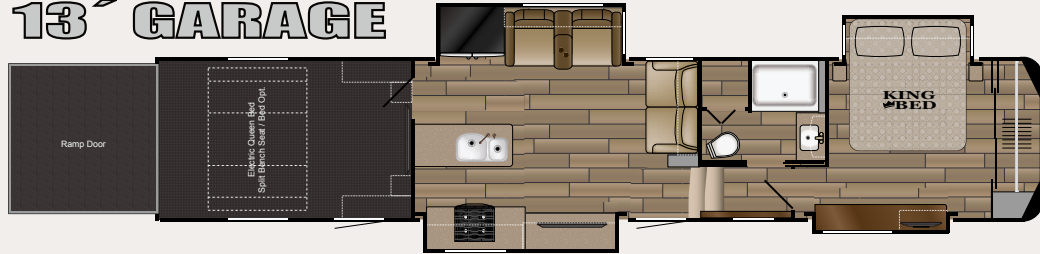
12' GARAGE



12' Garage
44' 2" Length
19,800 UVW
24,000 GVWR

MX450

13' GARAGE



13' Garage
44' 5" Length
19,660 UVW
24,000 GVWR

Note: All lengths are measured from the pin box to the rear cap. All dry weights are estimates depending on options.



Grey Stone

Partial Body Paint (Standard)



Twilight Mist

Partial Body Paint (Standard)



Invoke - Dinette Chairs



FULLHOUSE



Columbian Maple Cabinets



Hazelnut Cabinets



Irish Cream Cabinets



Aurora Ash Countertops



Cashmere Sofas



Pebble Sofas



Slate Sofas



Portabello Flooring



Vaga Flooring



Ground Fog Carpet

The foundation of true freedom.

If there's one thing we've learned after all these years on the road, it's this: People choose DRV Luxury Suites because they're ready to *enjoy* life. They don't want to spend their time worrying about things like quality, construction and service. Which is why we put so much thought into them in the first place. Every DRV product is built to *last* — with our unique triple-stacked box tube frame, the thickest sidewalls in the industry, screwed and glued aluminum framing for unshakable stability, and dozens of no-excuses features that'll keep you safe, comfortable and worry-free, even when Mother Nature's at her worst.

Structure

Custom engineered and tested 15" triple steel box tube chassis. Super strong foundation to build a lasting, high quality fifth wheel.

All-weather heavy duty aluminum floor system. The floor is screwed and bolted together and will not rot over time. We also refuse to use staples which eventually work up through the floor covering.

R-29 insulated frame floor system with three weather barriers. Warm floors for extended or full-time use; keep out condensation.

Technology

New state-of-the-art Level-Up™ leveling system and industrial hydraulic system. Level your coach with the push of a button.

New automotive style Kodiak® disc brakes. Limited lifetime warranty; smoother stopping; shorter stopping distance; low maintenance cost.

Heavy duty Goodyear® H-rated 17.5" tires and aluminum eight-bolt wheels. Heavier load capacity. Special tread pattern to dissipate heat. Tires are regroovable for miles and miles of safe use. Wheels are lightweight and will not rust.

SeeLevel tank monitoring system. Uses sonar to provide instant and accurate readings of all tanks.

At DRV Luxury Suites, we build each fifth wheel the same way we'd build our own home. And we appoint it with the finest luxury features available — lush homelike furnishings, cedar-lined closets and fireplaces, large French door refrigerators, stainless steel appliances, top-of-the-line electronics and more. Then we back it up with the best quality control and customer service in the industry. Every single coach is tested before it ever leaves the factory. And, if you should someday have a problem, rest assured, we'll get it fixed. No matter where you are. Day or night.

Livability

Screwed and glued construction. Solid; 16" o.c. stud spacing.

3.25" aluminum framed walls with R-16 insulated rating. Exclusive foam core vapor barrier. Lightweight; lower heating and cooling cost; noise reduction; eliminates chance of condensation.

Radiused aluminum roof rafters on 16" centers. More space; more insulation; improved water run-off; maximum load capacity per square foot.

R-25 insulated roof system with plywood and rubber or fiberglass covering. Improved weather barrier; sound deadening; low maintenance; lower heating and cooling costs.

Soft touch interior ceiling. Sound proofing; easy to clean; extra insulation.

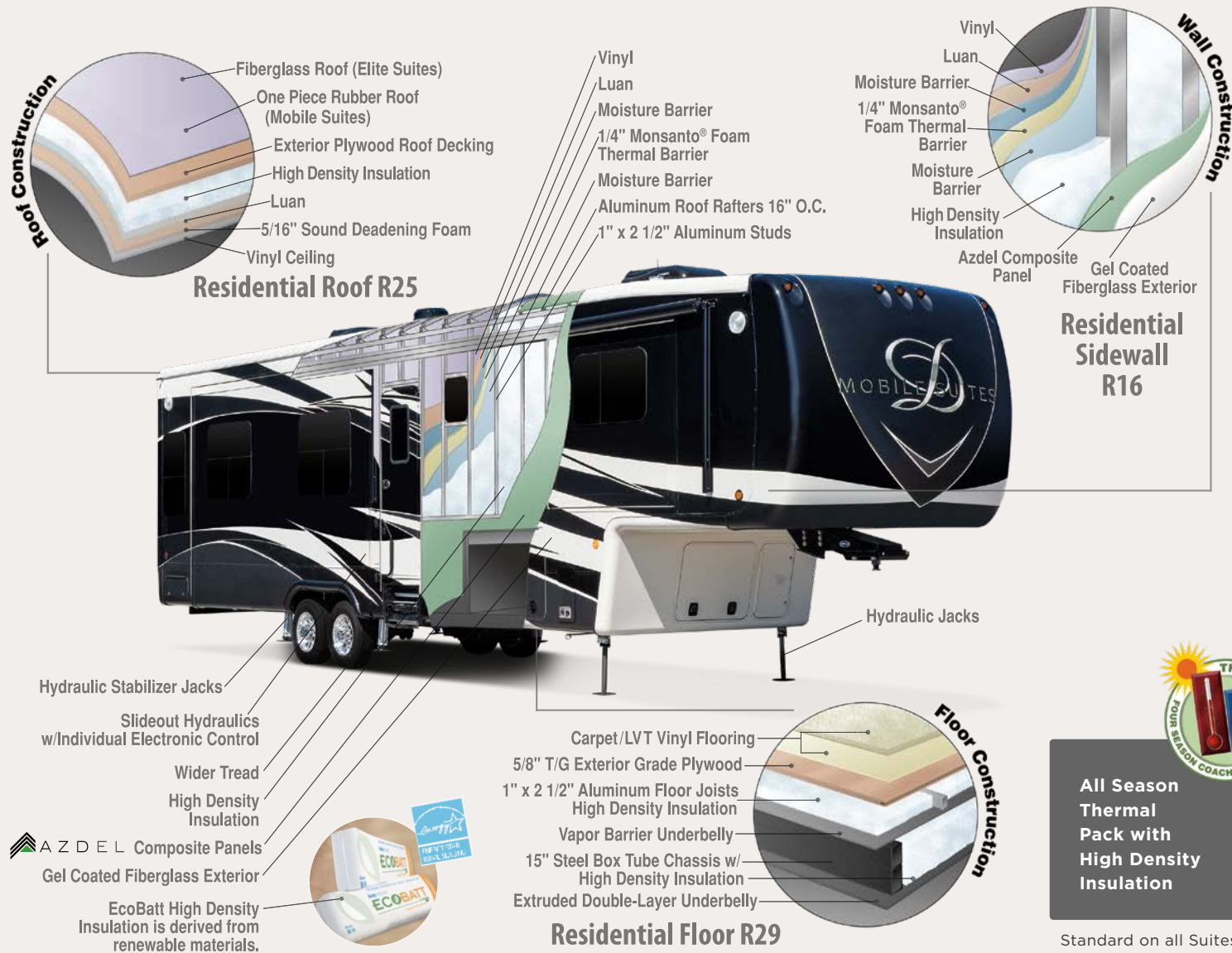
Refinements

Conveniently located wall switches control all lighting. Fingertip control of all task and decorative lighting.

Overhead LED room lighting on dimmer switches. Personal light control.

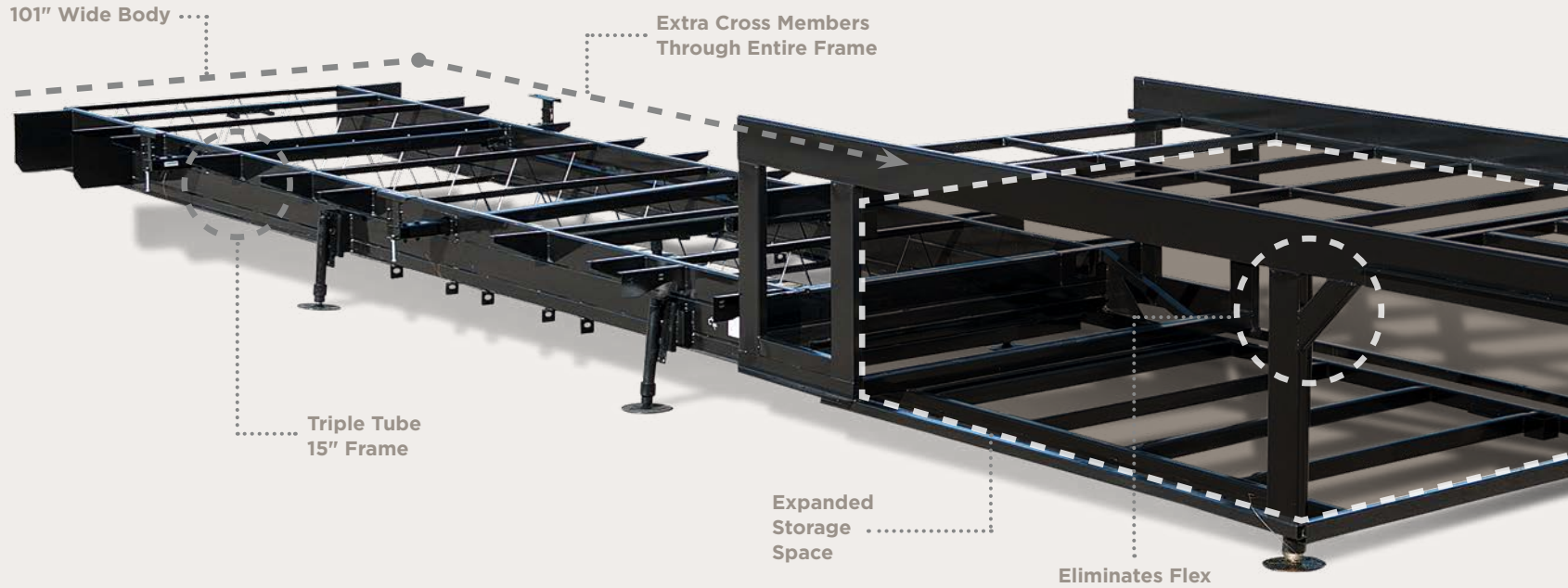
Designer raised panel cabinet doors and soft close drawers. Optimal storage; residential look; residential function.

NOTE: Some features shown are exclusive to specific makes and models. Please review the complete Standards and Options list for availability.



Reliability

- High pressure hydraulic lines with metal fittings
- Individual push-button slide room controls
- Industrial stabilizer jacks located and wind tested to provide maximum stability
- Heavy gauge UL copper wiring
- Residential copper water manifold
- Reliable LED lights
- Convenient lights at all exterior service locations
- Gel coat fiberglass walls and exterior doors
- Plywood roof decking
- Extra sound proofing in floor, walls and roof
- Ultra quiet ducted lo-pro A/Cs
- Automotive disc brakes
- Furnace return air replaceable filter
- Oversized basement storage doors with gas lift cylinders
- Custom painted exterior graphics
- Tough-skin, specially coated rock guard



Stacked triple-tube steel frame for 15" of maximum strength; the largest foundation on any fifth wheel in the industry.



Pinless hydraulic jacks are mounted at a 5-degree angle for maximum stability.



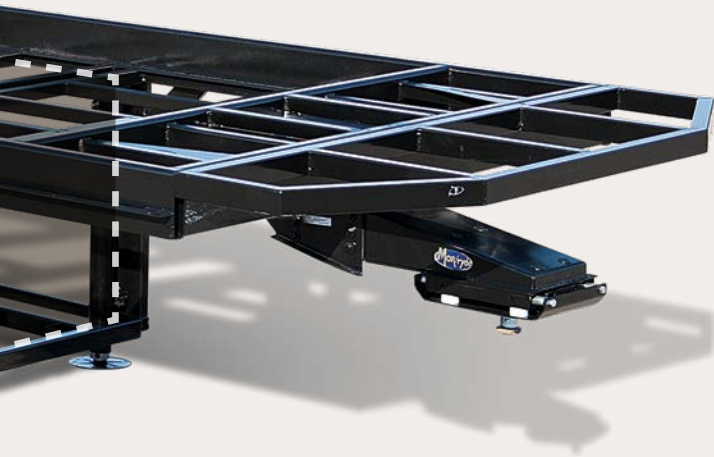
Commercial hydraulic rack & pinion slide-outs. All gear boxes are located inside the frame for the ultimate weather protection.



Residentially hung sidewalls are carriage-bolted into the floor for solid construction and superior strength.



R-16 residential insulation completely surrounds all of our walls and slides. Best insulation in the industry and eco-friendly!



Solid Box Steel Frame

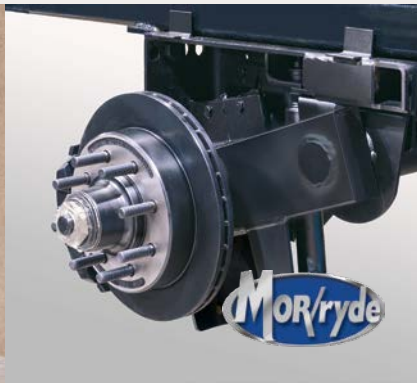
The foundation is the most important part of your home. It needs to be strong, reliable and able to last the test of time. DRV's custom-engineered 15" triple box tube frame measures 101" wide - the largest, most rigid fifth wheel frame in the industry. This design eliminates flex around the pin box and allows us to frame even the upper deck with steel to open up the storage compartment, providing you with space to fit all your personal belongings.

DRV 6-Jack Level-Up System

Designed by DRV, our 6-jack level-up system provides quick and easy leveling and the strength to stabilize the coach when set up.



Our 3 1/4" walls are the thickest in the industry, giving you maximum insulation from noise and weather. The exclusive foam core vapor barrier eliminates condensation.



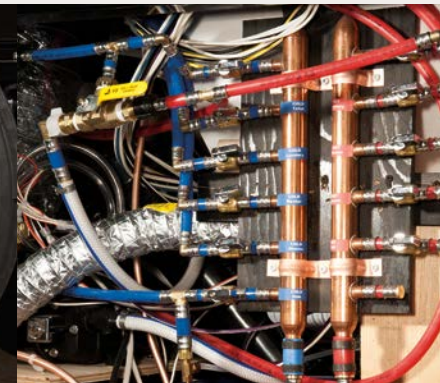
MORryde® I.S. Suspension eliminates the axle and leaf springs, allowing each tire to work independently. With 5 1/2" of travel per assembly, MORryde® I.S. will absorb road shock and protect your home for its lifetime.



Commercial E-Z Lube® hubs surrounded by 8 large 5/8" stud bolts and standard automotive disc brakes round out the safety features of every DRV unit.



Heavy-duty 17.5" Goodyear® tires provide increased load capacity while staying cool on long hauls. We use truck tires, not RV tires, to ensure better performance and peace of mind.



A copper water manifold comes standard, ensuring equal water pressure throughout your home. And each water line is clearly labeled and has its own shut-off valve, allowing you to isolate a single line without shutting off water to the rest of your home.

Standards

Frame/Running Gear:

- Goodyear® 17 1/2" H-Rated Re-Groovable Tires
- Heavy Duty Grease Bolt Shackles w/Bronze Bushing
- Automotive Style Disc Brakes
- Heavy Duty 8,000 Lb. Rated Axles (Most Models)
- Commercial Grade EZ Lube Hubs
- 15" Triple Stacked Box Tube Frame
- 101" Wide Body
- Industrial Hydraulic System for Jacks & Lower Level Slides
- Electric Bedroom Slide
- Slide Outs w/Select Push Button Controls
- Pinless, Industrial Hydraulic Front Landing Jacks at 5° Outboard Angle

Construction: Floor

- 3" Thick Floor
- 14" O.C. Floor Aluminum Floor Joists
- Screwed & Glued Joist Construction
- 5/8" Tongue & Groove Plywood Flooring
- Residential Perimeter Heating
- Residential Rated R29 Formaldehyde Free Insulation

Construction: Walls/Slides

- 3 1/4" Thick Walls/Slides
- 16" O.C. Stud Spacing
- Screwed & Glued Aluminum Stud Construction
- 1/4" Monsanto® Fome-Cor Vapor Barrier (Eliminates Condensation)
- 1/4" Thick High Gloss Gelcoat Fiberglass
- Azdel OnBoard Composite Panels
- Residential Rated R16 Formaldehyde Free Insulation

Construction: Roof

- 16" O.C. Rafter Spacing
- Residential Rated R25 Formaldehyde Free Insulation
- 1/2" Plywood Roof Overlayment
- Seamless, 1-Piece Rubber Roof
- Soft-Touch Vinyl Ceiling, Including Interior Slide-Out Ceilings

Exterior:

- Straight Roof Line w/8' Tall Interior Slide Out Height
- Subzero Thermo- Pack High Density Insulation
- High Gloss Gelcoat Fiberglass
- High Gloss Gelcoat Fiberglass Molded Caps

- Custom Painted Exterior w/Clear Coat
- Frameless Tinted Safety Glass Windows
- LED Back-Up Lights
- Commercial LED Exterior Clearance Lights
- Mid-Ship and Front Cap Turn Signal
- LED Docking Lights
- Dual 78" Entry Door
- Removable Storm Door Panels
- Metal Slam Door Compartment Latches
- Extra Thick Compartment Doors w/Gas Struts
- Motion Sensor LED Lights in Basement
- Custom Enlarged Control Center w/ LED Lighting
- Lend-a-Hand Exterior Grab Handle
- Power Awning w/Aluminum Weather Shield (Over Both Entry Doors)
- Water Pump Switch at Outside Hookup Center

Systems/Tanks:

- 50 Amp Service w/Detachable Cord
- 80 Amp 12 VDC Converter
- 100 Gal. Fresh Water Tank
- 75 Gal. Grey Water Tank w/Power Flush
- 50 Gal. Black Water Tank w/Power Flush

- SeeLevel Tank Monitoring System on All Tanks
- Residential Type 1/2" Water Lines
- Exclusive Copper Water Manifold w/Individual Shut-Off Valves
- Whole House Water Filtration System
- Multi-Switch Water Bypass System
- Slide Out Propane Tray w/Dual 40 Lb. Tanks
- 12VDC Battery on Pull Out Tray
- 12 Gal. Gas/Electric DSI Water Heater
- 40,000 BTU Furnace w/Custom Plenum
- Residential 5 Duct Heating System w/6" Ducting
- Forced Heat Ducting to Tanks/ Water System
- Fully Ducted A/C System w/Cold Air Return
- Triple 15,000 BTU Low-Profile A/Cs
- Solar Prep
- HD Roof Satellite Prep for Dual DVR Receivers
- HD Ground Satellite & Cable Prep
- HD TV Antenna

Interior: Luxury Living Room/Dinette

- Hand Laid Vinyl Floor Tile
- Residential Rebond Carpet Pad

- Plush Residential High Durability Carpet
- Solid Hardwood Cabinetry
- Interior Ceiling Fan (most models)
- Solid Hardwood Fascia Trim Around Slide Outs
- Solid Hardwood Cabinet Stiles (Pocket Drilled/ Screwed)
- Concealed Cabinet Door Hinges
- Raised Panel Cabinetry
- Soft-Close Full Extension Metal Drawer Guides
- LED Interior Ceiling Lighting on Dimmer Switches
- Utility Closet w/Coat Storage & Centralized Control Station
- Custom Hardwood Dinette Buffet w/Solid Surface Top (Some Models)
- Dinette Table w/Hidden Leaf Extension (Some Models)
- (2) Hardwood Dinette Chairs w/Fabric Accent (Some Models)
- Crown Molding Throughout
- HD Wiring Throughout

Interior: Gourmet Kitchen

- 20 Cu. Ft. Residential Stainless Steel French Door Refrigerator

- Pull-Out 13 Gal. Garbage Can
- Stainless Steel Convection/Microwave
- Deep Double Bowl Stainless Steel Sink w/Sink Covers
- Residential Kitchen Faucet w/Sprayer
- High Polished Solid Surface Countertops
- Residential Style Stainless Steel Range
- Custom Appliance Garage w/Pull-Out Tray (Most Models)
- Lighted Pantries & Kitchen/Bathroom Toe Kicks

Interior: Master Bath/Hallway

- Hardwood Steps
- Hand Laid Vinyl Tile Throughout
- Washer/Dryer Prep
- Heat & A/C Ducting in Bathroom
- Maxxair® Fan in Bathroom
- Custom Fiberglass Shower Pan with Custom Shower Surround
- Sky-Light Over Shower w/LED Pot Light
- Porcelain Toilet w/ Water Saver Spray
- Macerator Toilet (Some Models)

Interior: Master Bedroom

- Custom Walk-in Front Closet w/Built in Dresser (Most Models)
- Real Cedar Lined Front Closet
- Custom Hardwood Wardrobe Doors
- King Bed Suite 72" x 80" w/Innerspring Mattress
- Full Storage Under Bed Base
- 32" TV with Built in Soundbar
- Dimmable Over the Bed Reading Lights on Separate Switches
- Vanity Slide

Garage:

- Industrial Metal Overhead Cabinetry
- LED Lighting
- 50" LED HD TV
- Touch Screen/Blue Tooth Garage Audio/ Ent. System
- Dual 30 Gal. Fuel Tanks w/Fuel Pump & Fill Station

Full House Package (Forced Option):

- 55" LED TV & Home Theatre Package
- 32" LED Bedroom TV Package

- 50" LED TV Garage
- Garage Ent. System w/Touch Screen
- Goodyear® 17 1/2" H-Rated Spare Tire
- Side Mounted Fold-Out Ladder
- Frameless Thermopane Windows
- Dual Door 4-Step Entry

Executive Package (Forced Option):

- MCD Day/Night Roller Shades
- Built-In Fireplace
- Magnum 1000W Inverter w/Dual 6V Batteries
- Maxxair® Fan w/Rain Sensor - Bathroom
- Maxxair® Fan w/Rain Sensor - Kitchen
- Power Mgmt. System
- Six Point Hydraulic Leveling System
- One Touch Auto Leveling
- Keyless Entry Door (Both Doors)
- Onan 5.5 Gasoline Generator w/Auto Gen. Start

Options

Cabinets (Standards):

- Hazelnut
- Irish Creme
- Columbian Maple

Décor (Standards):

- Invoke

Countertop (Standard):

- Solid Surface

Interior:

- Power Recliner Theatre Seating/ Recliners
- Hazelnut Folding Chair
- Columbian Maple Folding Chair

Entertainment:

- 32" LED HDTV Outdoor Ent. (Some Models)
- Winegard® Trav'ler HD Auto Satellite
- WiFi Ranger Wireless Router

Bedroom:

- Built in Front Wardrobe Safe w/Keyless Entry
- Queen Bed Suite

Garage:

- Electric Drop Down Sofa/Bed
- Electric Drop Down Bed
- Fold-Up Outdoor Patio
- 3 Season Patio Door
- Removable Table

Systems/Vents/Fans:

- Heat Pump
- Maxxair® w/Switch Control - Garage
- Splendide® Front Load 2 piece
- Splendide® XC 2,100 Combo

Construction/Running Gear:

- Power Cord Reel (Some Models)
- HBA Brake Cam (To be Ordered Special for Customers w/GM Trucks)

Exterior/Awnings:

- Slide Toppers
- Power Dinette Slide Awning w/Weathershield
- Slide Out Storage Tray (36" x 90")
- Audible Wireless Backup Camera System
- CSA

Partial Body Paint (Standards):

- Grey Stone
- Twilight Mist

This brochure is based upon the latest product information available at the time of printing. DRV reserves the right to make changes at any time to prices, colors, materials, equipment, specifications and models, and to discontinue models without notice or obligation. Color representations are as close as photographic/print reproduction will allow. All specifications are approximate and dimensions nominal. Text and/or photos may represent equipment or décor items which may not be included as a standard item in your model of choice.

Full House

2021

Freedom is calling.

Peace of mind from coast to coast.

Relax. Your new DRV fifth wheel is backed by the best customer service on the road. Whether you need a mobile tech, warranty work or just a little help figuring out your electronics, we'll make it right. Anywhere in America. *That's* true freedom.

DRVSuites.com
Destination freedom.



www.suitesowners.com | Be sure to join our outstanding DRV owner's club!

0160 W 750 N | PO Box 235 | Howe, IN 46746
Factory tours by appointment. Please call 260-562-1075 for specifics.

