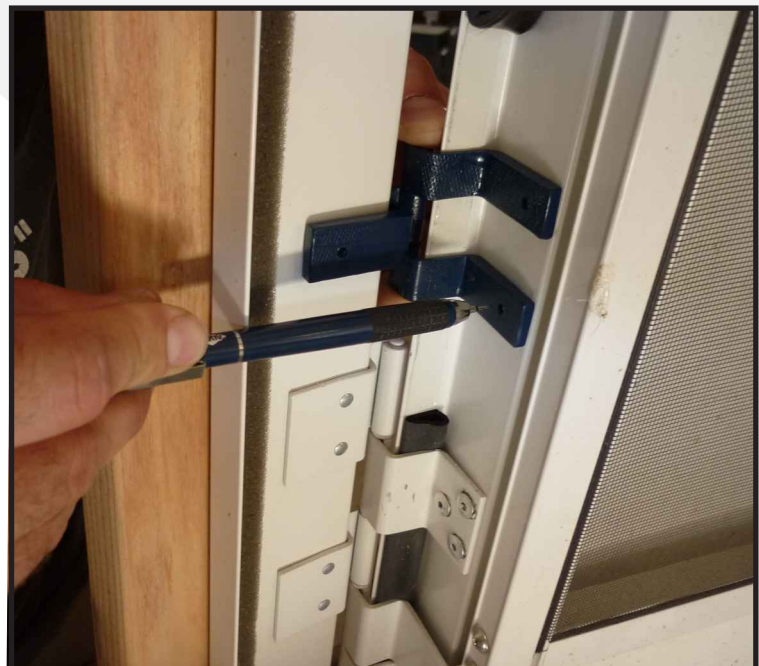




Using a HAC installation /mounting template, locate the center of the existing hinge. This aligns the pivot centers for a correct install.

Hinge and HAC center pivot must be in alignment.

Mark mounting holes to be drilled.

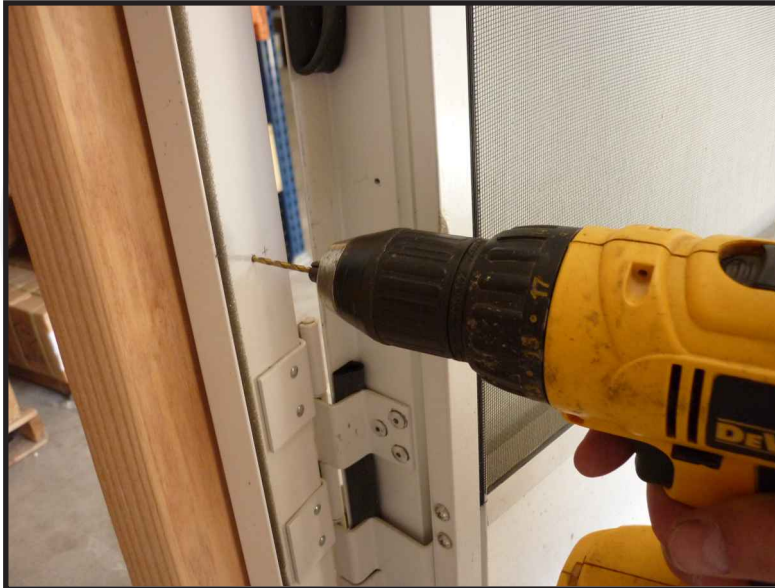


BORN IN THE USA



RAISED IN AUSTIN TX™





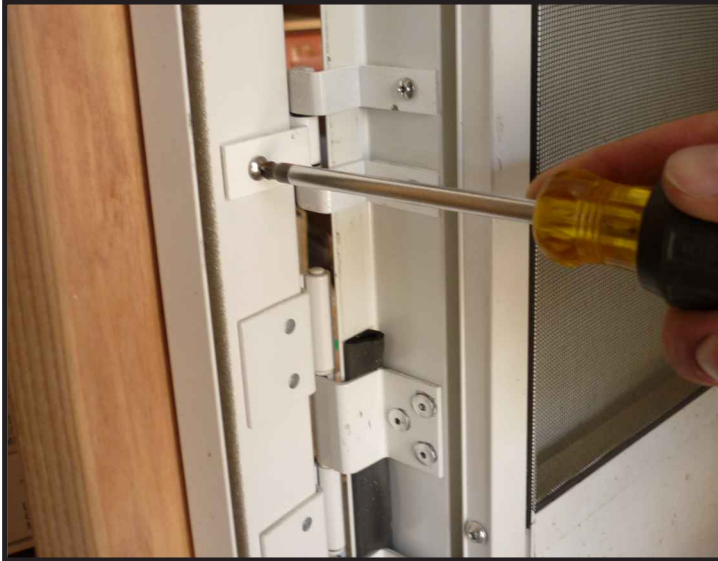
Pre drill mounting screw holes using + - .095" bit.

Note HAC:

Is shipped with a rubber band holding the hinge flanges in the intended orientation needed to be installed too.

Measure .250" from the center of the mounting hole and pre-drill a 1/4" wire chase hole.





A dry fit is highly recommended before attempting final placement. Remove adhesive covering prior to final HAC placement. Adhesive foam, once placed cannot be reused.

Do not use power actuated tools to install the # 6 x 1/2" stainless steel panhead screw.

Hand tighten the mounting screws. To acquire correct screw torque tighten screw 1/4 turn after foam has touched. (Note: Avoid Over Tighting)

Once HAC is installed reinstall weather strip.

Continue with wiring.

Note: HAC can be painted to match unique colors to match local trim.

