



**MOBILE SUITES**  
AIRE

2018 LUXURY FIFTH WHEELS



**MSA 40 • Mocha Cherry with Cobblestone Décor**

The new Mobile Suites Aire features tons of interior and exterior amenities geared toward the extended stay or full-time RV'er. This new product line was designed to bring the quality look and feel of our Mobile Suites into a lighter weight class. Inside and out you will find the features that made DRV Luxury Suites the leader in the luxury 5th wheel market.







Standard full exterior paint with clear coat.





MSA 40 • Mocha Cherry with  
Cobblestone Décor





The Aire was designed as a 101" wide body with a straight roof line. This allows for 8' tall lower level slide outs with extended cabinetry, and more interior living space due to the extra width. Inside is surrounded with hardwood cabinetry, hand-laid vinyl tile flooring, residential appliances, and soft-close drawer guides. For the full-time customer the Mobile Suite Aire provides custom painted exteriors, dual pane windows, our copper water-manifold, and automotive disc brakes. It's just as important to provide the best exterior features in order to protect the comfort of the home inside.







MSA 40 • Mocha Cherry with Cobblestone Décor





Due to the wide body design, all Mobile Suite Aire floor plans come standard with our vanity slide increasing the walk way in front of the bed. We bring our hand laid vinyl tile up through the bedroom which eliminates the chance of carpet staining or aging.







MSA 38 • Hazelnut with Cobblestone Décor





Attention to detail remained the focus when designing the Aire. Featuring a custom backsplash, island, and over the island light. These added touches not only make the Aire feel like home, but they are functional as well.





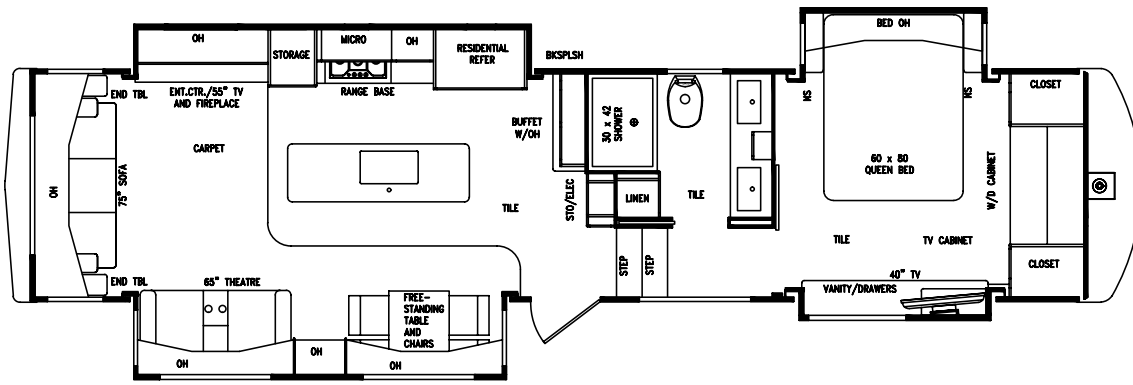


**MSA 38 • Hazelnut with Cobblestone Décor**

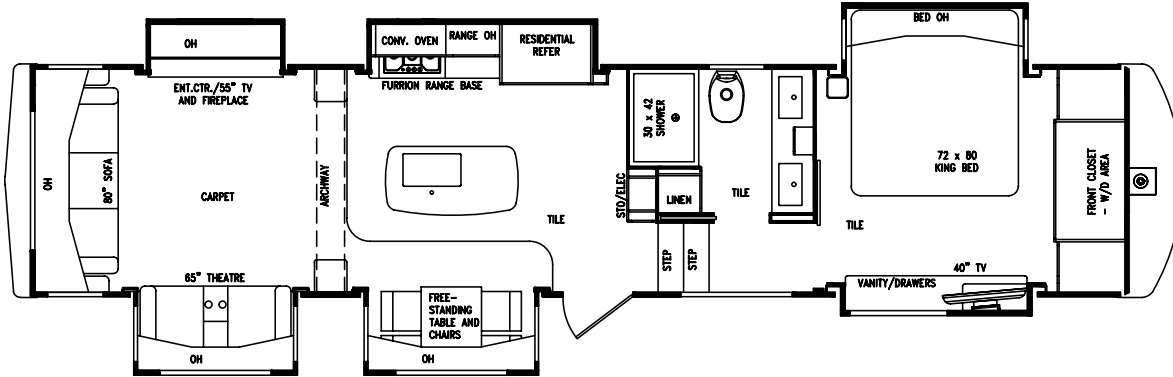
Inside each bathroom you will find a recessed shower allowing for up to 6' 9" of headroom to the skylight for our taller customer. Each bathroom also features a built-in linen closet, his & her solid surface molded sinks and tons of storage. Every room of our Mobile Suite Aire floor plans offer full function and storage our DRV customers have come to expect from our company.



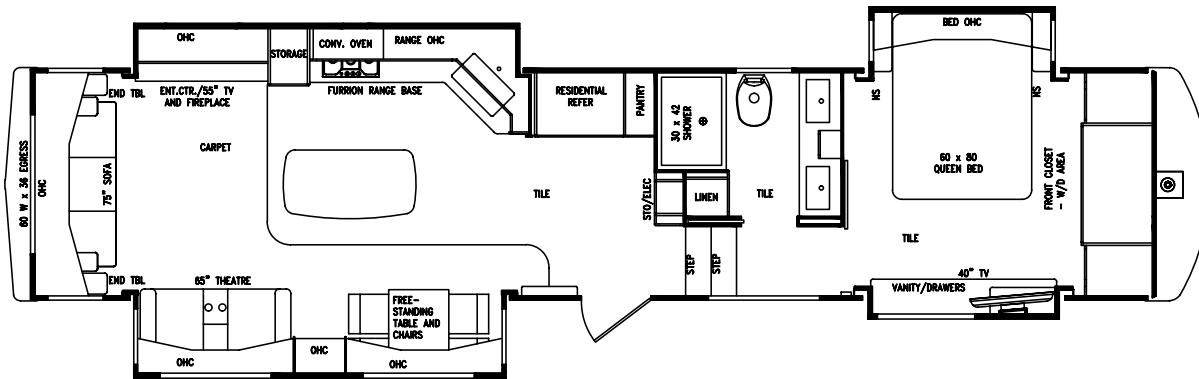




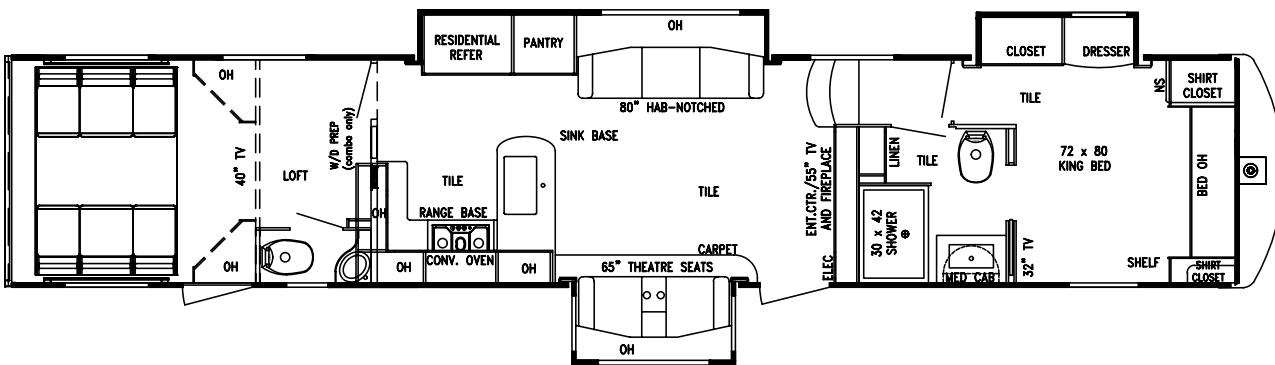
**MSA 38**  
Est. Dry Weight 14,250



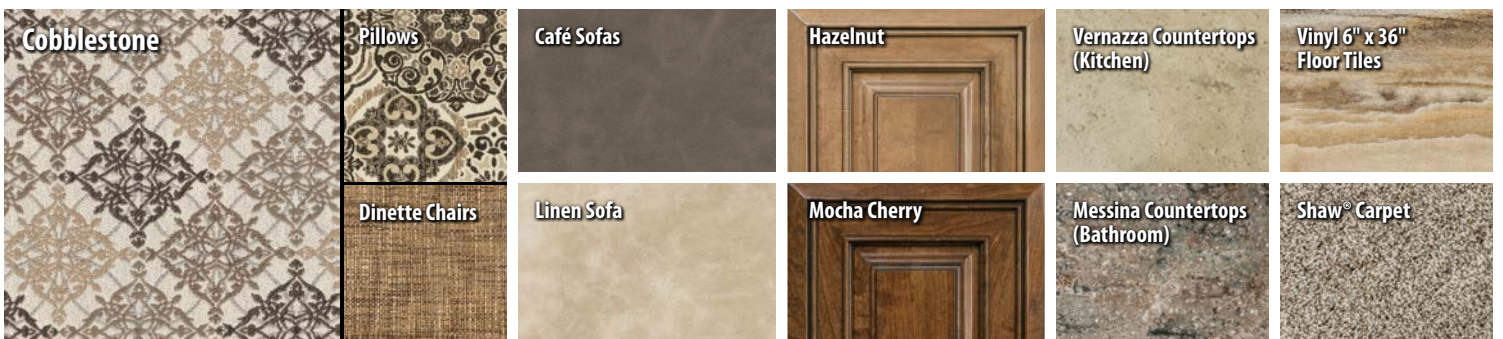
**MSA 39**  
Est. Dry Weight TBD



**MSA 40**  
Est. Dry Weight 14,500



**MSA 413**  
Est. Dry Weight TBD





## Mobile Suites Aire: Forced Package Includes

- Dexter Axles w/EZ Flex Suspension
- **Automotive Disc Brakes**
- Hydraulic 6-Point Automatic Level-Up System
- Solar Prep
- Satellite Prep
- Wi-Fi Ranger Prep
- **(2) 15,000 BTU Ducted A/C's**
- 12 Gal. Gas/Electric Water Heater
- 40,000 BTU Furnace
- Enclosed Underbelly
- Frameless Windows
- Power Main Awning w/LED Lights and Weather Shield
- Residential Stainless Steel Appliance Package
- 1,000 Watt Pure Sine Wave Inverter w/Dual 12V Batteries
- **Recessed Sealed 3 Burner Cooktop w/Hinged Cover**
- Convection/Microwave
- **Hand Laid Luxury Vinyl Plank Floor Tile**
- Solid Surface Countertops w/Lighted Island Edge
- Solid Hardwood Cabinetry Throughout
- Hidden Hinges, Soft Close Full Extension Drawers
- Day/Night Roller Shades
- Ceiling Fan
- Deluxe Hardwood Valances w/Fabric Insert
- 55" LED Main TV w/Sound Bar and Blu-Ray Player
- **40" Bedroom TV w/DVD Player**
- Washer/Dryer Prep
- Innerspring Mattress
- LED Interior Lights
- Electric Fireplace w/Remote Control

## Frame/Running Gear:

- Goodyear® Endurance Tires
- Heavy Duty Grease Bolt Shackles w/Bronze Bushings
- **Kodiak® Automotive Disc Brakes**
- Commercial Grade EZ Lube Hubs
- **101" Wide Body**
- Electric Bedroom and Vanity Slides
- Hydraulic System for Jacks and Lower Level Slides
- Pinless, Hydraulic Front Landing Jacks at 5 Degree Outboard Angle

## Construction: Floor

- 3" Thick Floor
- 14" O.C. Aluminum Floor Joists
- Screwed and Glued Joist Construction
- 5/8" Tongue and Groove Plywood Flooring
- **Four Season Perimeter Heat Ducting in Floor**
- **Residential Rated R-30 Formaldehyde Free Wool Insulation**

## Construction: Walls/Slides

- 2" Thick Walls w/Double Luan Backer
- **Residential Rated R-11**
- High-Gloss Fiberglass Walls

## Construction: Roof

- 16" O.C. Rafter Spacing
- **Residential Rated R-25 Formaldehyde Free Wool Insulation**
- **Plywood Roof Overlayment**
- Seamless, 1-Piece Rubber Roof

## Exterior:

- **Straight Roof Line w/8' Tall Interior Slide-Out Height**
- **Custom Painted Exterior w/Triple Clear Coat**
- High Gloss Gelcoat Fiberglass Molded Caps
- Frameless Tinted Safety Glass Windows
- Exterior Security Light
- Commercial LED Exterior Clearance Lights
- LED Turn Signals
- LED Docking Lights
- 78" Entry Door
- Metal Slam Door Compartment Latches
- Extra Thick Compartment Doors w/Gas Struts
- Easy Access Light Switches for Basement Storage
- Washable Storage Compartment Liner
- Custom Enlarged Control Center w/LED Lighting
- Lend-a-Hand Exterior Grab Handle
- Power Awning w/LED Lights and Aluminum Weather Shield

## Systems/Tanks:

- 50 Amp Service w/Detachable Cord
- 80 Amp 12VDC Converter
- 100 Gal. Fresh Water Tank
- 90 Gal. Dual Gray Water Tank w/Power Flush
- 45 Gal. Black Water Tank w/Power Flush
- **Residential Type 1/2" Water Lines**

- **Exclusive Copper Water Manifold w/Individual Shut-Off Valves**
- Whole House Water Filtration System
- Anderson Multi-Switch Water Bypass System
- Dual 30 Lb. L.P Tanks
- Battery Disconnect
- 12 Gal. Gas/Electric DSI Water Heater
- 40,000 BTU Furnace
- **Fully Ducted A/C System w/Cold Air Return**
- Solar Prep
- HD Roof Satellite Prep for Dual DVR Receivers
- HD Ground Satellite and Cable Prep

## Interior: Luxury Living Room/Dinette

- **Hand Laid Vinyl Plank Tile**
- Residential Rebound Carpet Pad
- Plush Residential High Durability Carpet
- Solid Hardwood Cabinetry
- Solid Hardwood Fascia Trim Around Slide-Outs w/LED Lighting
- Solid Hardwood Cabinet Stiles (Pocket Drilled/Screwed)
- Concealed Cabinet Door Hinges
- Raised Panel Cabinetry
- **Soft-Close Full Extension Metal Drawer Guides**
- LED Interior Ceiling Lighting
- Utility Closet w/Coat Storage and Centralized Control Station
- Interior Ceiling Fan
- Decorative 12V LED Light Sconces
- Dinette Table w/Hidden Leaf Extension
- Hardwood Dinette Chairs w/Fabric Accent
- Crown Molding Throughout
- HD Wiring Throughout
- Residential Sofa w/Hide-a-Bed
- Residential Theatre Seating w/Center Console (Side Entertainment Models)

## Interior: Gourmet Kitchen

- 20 Cu. Ft. Residential Stainless Steel French Door Refrigerator
- Stainless Steel Convection/Microwave
- **Pull-out 13 Gal. Garbage Can**
- Single Base Stainless Steel Sink
- Residential Kitchen Faucet w/Separate Sprayer
- Custom Residential Style Backsplash

- High Polished Solid Surface Countertops
- **LED Lighted Avonite® Edging Around Island**
- Recessed Sealed 3 Burner Cooktop w/Hinged Countertop Lift
- Custom Appliance Garage w/Pull-Out Tray (Most Models)
- **Custom Over the Island Wood Accent w/Lights**
- **Lighted Pantry and Kitchen/Bathroom Toe-Kicks**
- **LED Lights Above Fascia Trim**

## Interior: Master Bath/Hallway

- **Hardwood Steps**
- Hand Laid Vinyl Plank in Hallway/Bathroom
- Washer/Dryer Prep
- Heat and A/C Ducting in Bathroom
- Maxxair® Fan in Bathroom (Exhaust Only)
- **Recessed 48" 1-Piece Fiberglass Shower w/Molded Seat**
- Sky-Light Above Shower w/LED Pot Light
- Porcelain Toilet w/Water Saver Spray

## Interior: Master Bedroom

- Queen Bed Suite 72"x 80" Innerspring Mattress
- Full Storage Under Bed Base
- **Over the Bed Reading Lights on Separate Switches**
- Hand-Laid Vinyl Tile Throughout Bedroom

## MSA 413 Aire: Forced Package Includes (Same as Above Plus the Following)

- Onan® 5.5 Gas Generator w/Push Button Start
- Dual 30 Gal. Fuel Tanks w/Fuel Station
- 3rd Ducted 15K Low Profile A/C w/Heat Pump
- 40" LED TV in Garage
- Happi-Jack System w/Drop Down Sofas
- Happi-Jack System w/Drop Down Queen Bed
- 3-Season Patio Door
- Garage Pedestal Dinette Table
- Heavy Duty Tie Down Supports in Garage
- Dual Power Awnings with LED Lighting
- MORryde® Zero Gravity Door w/Patio

Visit [www.drvsuites.com](http://www.drvsuites.com) to view a full list of options available on the Mobile Suites Aire



0160 W 750 N • PO Box 235  
Howe, IN 46746

Factory tours by appointment,  
please call for specifics 260-562-1075

[www.drvsuites.com](http://www.drvsuites.com)

facebook

twitter