



# TRADITION



*An inherent  
legacy of  
higher standards*



# TRADITION



385RSS/384RSS in standard Mocha Cherry with Chocolate Bloom décor

The **2014 Tradition** is a full residential, four season fifth wheel. It features a straight roof line with barrelled ceilings, 8' tall slide outs and extra large frameless Thermopane windows, which combine to provide an amazing amount of space and storage.

For full time RVers, the Tradition offers residential 16" O.C. construction with wool insulation for great protection in all climates. Step inside to find hand laid vinyl tile floor, built-in Bose® Sound Bar and Lane® leather furniture.

Don't sacrifice your household amenities, take them with you while you travel, with the **2014 Tradition**.





384RSS shown in standard Mocha Cherry with Golden Harvest décor

Surround yourself in the beautifully hand-crafted Mocha Cherry cabinetry throughout the entire coach. All Tradition floorplans offer abundant storage space for full-time needs, lighted island countertop edging and large pull-out trash can cabinets.



# Residential styled design attention to detail & proven engineering



The master suite features a walk-in closet with built-in dresser, abundant hanging space with extra storage under the bed. Full-ducted low profile A/Cs with cold air return allows for a restful night sleep, even with the A/C running.





**380RES** shown in optional Sage/Mushroom with Sage/Mushroom décor

The optional Sage/Mushroom custom cabinetry is the first of its kind in the industry and creates a beautiful, residential look. Every Tradition features solid cherry raised panel cabinet doors and lighted LED islands.

In every Tradition you will find a standard 47" LCD TV in the living room with built-in Bose® Sound Bar and a 29" LCD in bedroom.



Four season **comfort**  
is **built in,**  
not added on.

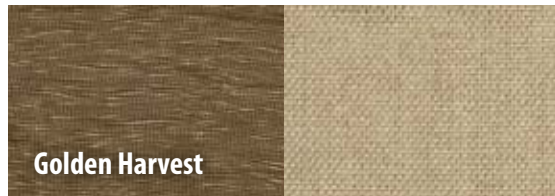
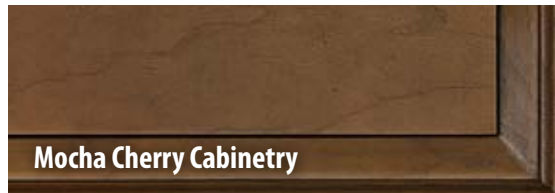


The gourmet kitchen features 18 cu. ft. Whirlpool® residential refrigerator and double layered over-the-island light feature. An abundant amount of storage, including dual pantries, surround the high-end appliances creating the perfect kitchen for full time use.

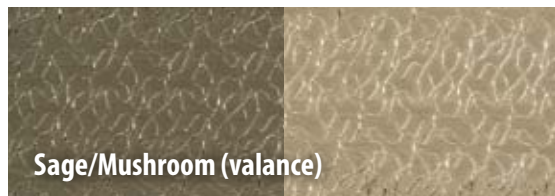
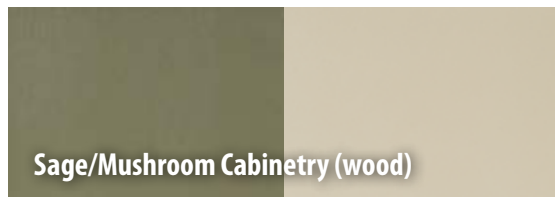


Large 48" fiberglass shower and deep vanity base makes the master bath functional and luxurious.

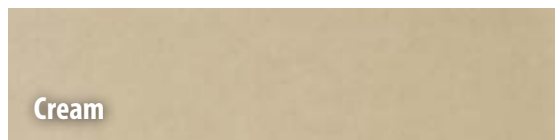
## Standard Décor Selections



## Optional Décor Selection



## Lane® Furniture Selections



### STANDARDS

### \* OPTIONS

#### Exterior:

- Power Awning w/ Aluminum Weather Shield
- 4 Scare Lights
- Step Light
- Over The Door Exterior Porch Light
- Expanded Front Storage Compartment
- Felt-lined Basement w/ Diamond Plate
- Slam Door Latch System on All Exterior Doors
- Extra Thick Baggage Compartment Doors on Gas Struts
- Washable Storage Compartment Liner
- Recessed Exterior Running Lights
- Automotive Style Rear Tail Lights
- LED Docking Lights Under Front Cap
- Exterior Grab Handle
- High Gloss Gelcoat Exterior Fiberglass
- Custom Colored Exterior Graphic Package w/ Partial Paint
- \* Full Body Paint w/ Clear Coat
- Frameless Thermopane Windows
- Straight Roof Line Exterior Profile
- Automotive Style Molded Front & Rear Caps
- One Piece Rubber Roof
- 78" Gelcoat Fiberglass Exterior Entry Door w/ Removable Storm Door Panels
- Ladder
- \* 4-Step Entry
- \* Power 4-Step Entry
- \* 2" Utility Hitch w/ 4 Way Flat Plug
- \* Keyless Entry Door
- Outside Gas Grill Hook-Up
- Outside TV Hook-Up in Basement

#### DRV EXCLUSIVE CONSTRUCTION:

- 16" O.C. Aluminum Stud Construction on Walls, Slides, and Roof
- 14" O.C. Aluminum Stud Construction on Floor
- Hung Sidewall & Slide Out Wall Construction
- Mechanically Fastened (Screwed & Glued) Floor, Wall & Slide Out Aluminum Cage Construction
- NO Lamination In Our Build Process
- Subzero Thermo-Pack High Density Insulation

- Residential Rated R11 Wall Insulation
- Residential Rated R11 Slide Out Wall Insulation
- Residential Rated R29 Floor Insulation
- Residential Rated R25 Roof Insulation
- 5/8" Tongue & Groove Plywood Flooring
- 3/8" Plywood Roof Decking
- 2 1/4" Thick Sidewalls & Slide Out Construction
- 1/4" Monsanto Foam-Core Vapor Barrier in Walls & Slide Out Walls
- \* RVIA Seal
- \* CSA (Canadian Units Only)

#### Interior:

- Barreled Interior Roof Design
- Recessed LED Pot Lights Throughout
- Increased Slide Out Heights w/ Larger Windows
- Full Residential Height Cabinetry
- Shaw Residential Carpet
- \* Louisiana Carpet Cut
- 16" x 16" Hand Laid Vinyl Tile on 45° Angle
- Rebond Carpet Pad
- Mocha Cherry Stained Custom Solid Cherry Cabinetry
- \* Sage/Mushroom Custom Cabinetry
- Hardwood Solid Cherry Fascia Trim Around Slide Outs
- Indirect Lighting above Cabinetry
- Hand Made Custom Designed Fabric Valances
- \* Solid Hardwood Valances
- Brushed Nickel Fixtures
- Concealed Hinges On All Cabinet Doors
- Soft-Close Metal Drawer Guides w/ Full Extension
- Residential Plantation Blinds
- \* Manual Day/Night Roller Shades
- DRV Decorative Metal Handrail in Hallway
- Full Length Overhead Dinette Cabinets w/ Center Feature Cabinet

#### Interior/Living Room:

- Fireplace w/ LED Lighting & Wireless Remote
- Power Lift TV (Rear Entertainment Models)
- 47" HD LCD TV w/ Blu-ray DVD Player
- 50" HD LED TV w/ Blu-ray DVD Player (390FLS)
- Bose® Sound Bar Surround Sound System Built into Overhead Cabinetry
- Solid Surface Countertop on Entertainment Center





Optional Silver Crest Full Body Paint

Optional Walnut Crest Full Body Paint

- Lane® Recliners (Rear Ent. Models)
- Lane® Sofa
- Lane® Theatre Seating (Side Ent. Models)
- Hide-A-Bed Mattress (Most Models)
- Pull-Out Drawer Above Fireplace (380RES)
- Magazine Rack (340RES & 380RES)

### Interior/Gourmet Kitchen:

- GE Stainless Steel Convection Microwave
- Amana® 3-Burner Cooktop w/ Gas Oven
- ★ Cooktop Only w/ 3 Drawers
- Stainless Steel 18.5 cu. ft. Whirlpool® Residential Refrigerator
- ★ Inverter for Refrigerator Only w/ Dual 6V Battery
- Large Dual Bowl Stainless Steel Sinks
- Floor To Ceiling Pantry w/ Adjustable Shelves
- Custom Multi-Function Pantry w/ Pull-Out Drawers & Appliance Tray (some models)
- Pull-Out Trash Can Cabinet w/ 13gal. Trash Can
- LG Solid Surface Countertops w/ Sink Covers
- Lighted Edge Island w/ LED Lighting & Switch Control
- LG Solid Surface Cooktop Covers
- Residential Kitchen Faucet w/ Pull-Out Sprayer
- Solid Surface Backsplash w/ Engraved DRV Logo
- Double Spice Rack
- Double Layered Over the Island Lighting w/ LED Lights & Pendants
- Hardwood Dinette Table w/ Extension & Hidden Storage
- Extra Large Dinette Chairs w/ Seat Spring Support (2)
- ★ Mocha Cherry Folding Chairs (2)
- ★ Fantastic Fan w/ Wall Switch In Kitchen

### Interior/Master Bath:

- LG Solid Surface Countertops
- Sink Vanity w/ Bank of Drawers
- Medicine Cabinet w/ Mirrored Front
- Shower Skylight
- 48" Fiberglass Shower (Some Models)
- Fiberglass Corner Shower (Some Models)
- Residential Commode w/ Spray Assist
- Fantastic Fan Create-A-Breeze
- ★ Fantastic Fan w/ Switch Control
- Hand Laid 16" x 16" Floor Tile Including Hallway

### Interior/Master Bedroom:

- Queen Bed w/ Tip Top Comfort Memory Foam Mattress
- ★ King Bed
- Night Stand
- 110V Outlets on Each Side of Queen Bed
- ★ Fantastic Fan w/ Wall Switch In Bedroom
- Wood Dresser w/ 6-Drawer Storage
- 6'7" Center Bedroom Height
- Walk-In Front Wardrobe w/ Built In Hardwood Dresser
- 29" HD LED Bedroom TV w/ Speakers
- Wired & Ducted for Second Bedroom A/C
- Separate A/C Bedroom Thermostat Control
- Wood Framed/Mirrored Wardrobe Doors

### Frame/Axles/Running Gear:

- 12" I-Beam Frame (96" Wide)
- Twin 7000lb E-Z Lube Axles
- 16" E-Rated Tires
- ★ Goodyear 16" G-Rated Tire Upgrade (Including Spare)
- 12 x 2 Electric Drum Brakes
- ★ Kodiak Disc Brake Package (Includes 8000lb Axles)
- Aluminum Rims w/ 8 Lug Bolts
- Spare Tire & Carrier
- Trailair® EquaFlex Suspension
- Extended Heavy Duty Pin Box
- ★ Trailair® Air Ride Pin Box
- Level-up (6-Jack Hydraulic Leveling System)
- 1-Touch Automatic Leveling

### Systems:

- 50amp Service w/ Detachable Cord
- Copper Water Manifold System
- Pex Water Lines
- ★ Water Filtration System
- Residential Washer/Dryer Hook-up Center
- ★ Splendide 2-Piece Front Load Washer/Dryer
- 10gal. DSI Gas/Electric Hot Water Heater
- Water Heater Bypass
- Dual 30lb. Propane Bottles
- ★ 40lb. LP Bottles
- Low Profile 15K BTU Main A/C
- Bedroom A/C Prep
- Ultra Quiet Residential A/C Ducting w/ Cold Air Returns

- ★ 15K BTU Ducted A/C
- ★ Heat Pump For A/C
- Perimeter Ducted A/C Vents w/ Direction Flow Design
- Superior Outside Service Command Center
- Water Pump Control Switch in Outside Command Center
- Central Vacuum
- Satellite Prep (Roof & Ground Prep)
- ★ Winegard Traveler Series Satellite for Direct TV
- HD TV Antenna
- Cable Hookup
- Outside Shower
- 40,000BTU Furnace System w/ Custom Plenum
- Perimeter Heat Ducting in Living Room
- 6" Extra Large Heat Ducts T/O
- Heated Bathrooms
- Forced Heated & Enclosed Holding Tanks
- ★ Heat Pads On Holding Tanks w/ Elbow Heaters
- 12V Heavy Duty Battery
- Battery Disconnect
- 60amp Power Converter w/ Charge Wizard
- ★ Generator Prep
- Solar Prep
- ★ Onan 5500 LP Marquis Gold Generator
- Industrial Hydraulic System (Slides & Jacks)
- Hydraulic Bedroom Slide (390FLS)
- Electric Bedroom Slide
- ★ Slide Toppers (Triple Slide)
- ★ Slide Toppers (Quad Slide)

### Holding Tanks:

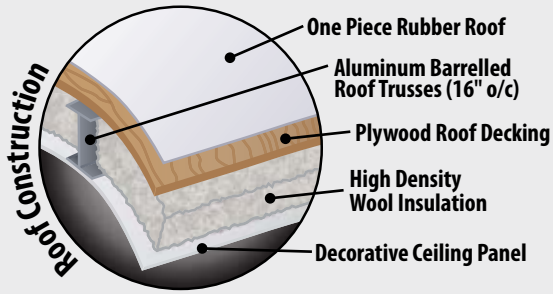
- 100gal. Fresh Water Tank
- 90gal. Grey Water Tank
- 45gal. Black Water Tank



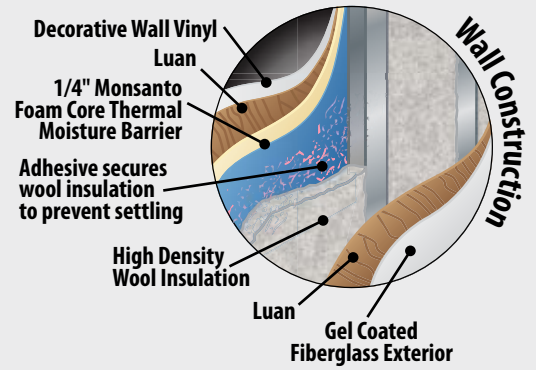
Residential washer/dryer hook-up in laundry closet.

## Coach-Net®

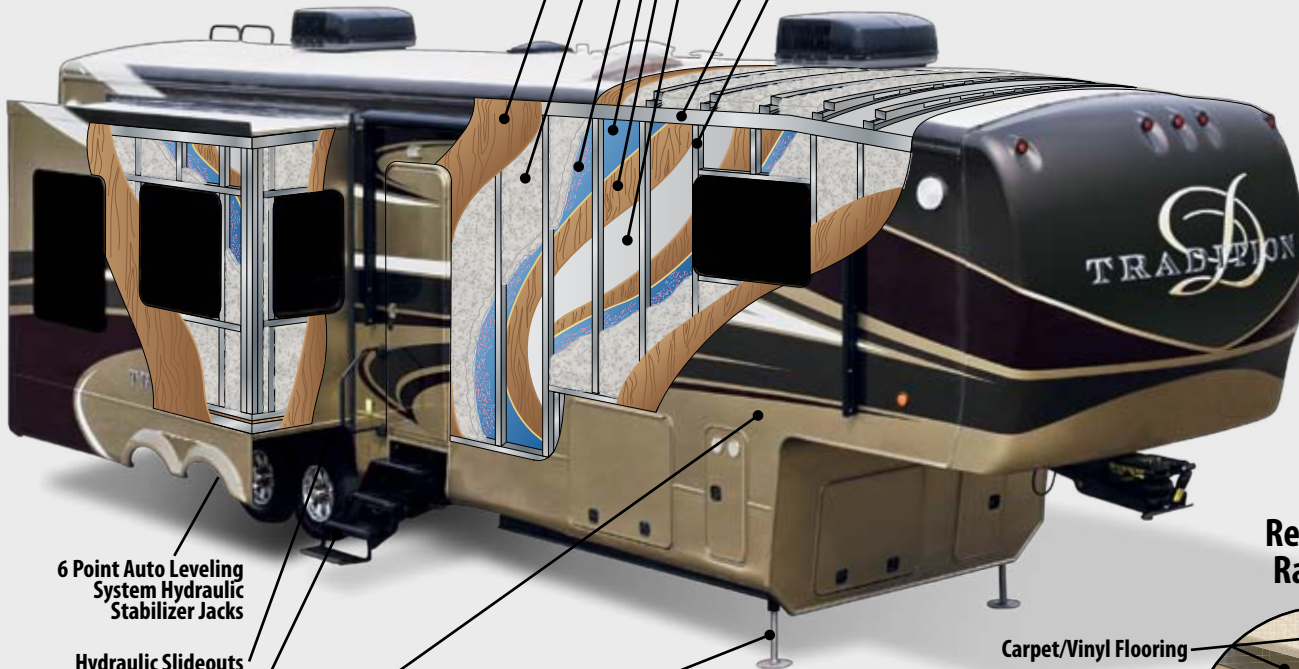
EMERGENCY ROADSIDE ASSISTANCE is provided with purchase of each Tradition



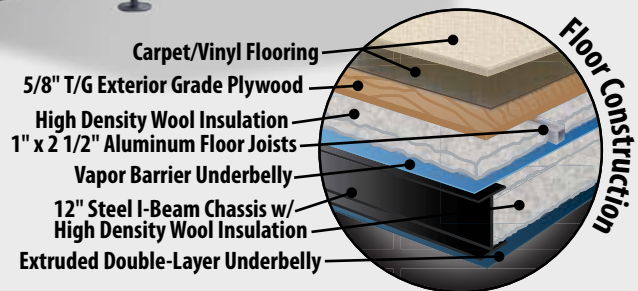
**Residential Rated R25**



**Residential Rated R11**



**Residential Rated R29**



**Subzero Thermo-Pack Insulation package**

is standard on Tradition and encases the entire structure resulting in better year round comfort control of your extended travel suite. Residential style High Density Wool Insulation is utilized in the roof, side walls, sub-floor assembly and is even added to the underbelly frame space. High density wool provides improved efficiency by filling any voids, and we even take the extra step to glue-apply the wool insulation within the walls to totally eliminate settling.



**Just compare!**

Many RVs use rigid block foam. Although a good insulator, this method leaves too many uninsulated voids which greatly compromises the efficiency. Others use only a thin reflective foam barrier, not practical for multi-season extended stay travel.



**EcoBatt High Density Wool Insulation is derived from renewable materials.**

# The Tradition Advantage



Standard 1-Touch Automatic Leveling



Optional rear 2" hitch receiver.



Optional TrailAir® Air Ride pin box provides a smoother ride plus better handling while minimizing noise and vibration.



Standard Level-Up™ provides maximum stability with six heavy duty hydraulic jacks.



TrailAir® EquaFlex Suspension is standard. Kodiak Disc Brake Package, that includes 8000 lb capacity axles, is available as an option.



All aluminum sills and wall studs are mechanically joined and the aluminum sill tubing is fully reinforced internally with wood, providing greater strength and stability when it is "bolted-through", never screwed, to the sub-floor structure and the steel frame below.



**A DRV EXCLUSIVE**  
Thicker side walls allow for high density wool insulation, with an **integrated 1/4" thick foam core moisture barrier**, to eliminate condensation and add an additional insulating moisture barrier layer.



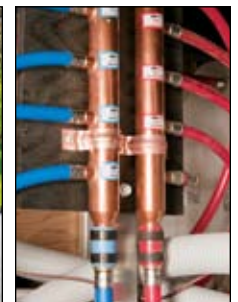
The coach and slide outs have aluminum wall studs and roof trusses positioned 16" on-centers, and the aluminum sub-floor joists are 14" on-center. Residential style high density wool insulation, in the side walls, is glued into place to prevent future settling. All spaces and voids are filled with wool insulation as well.



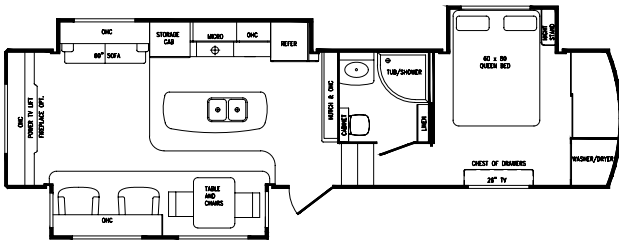
High density wool insulation blankets the underbelly frame spaces and the flooring assembly, to provide added protection for the water systems. Perimeter heating features 6" ducts and custom plenum with 5-duct heating.



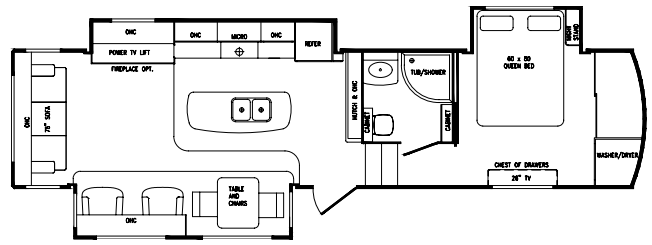
The large pass-through basement storage area is felt lined and provides abundant space for extended travel lifestyles. The copper water manifold system is easily accessible and heavy duty basement doors open easily and close securely with two gas assist lift arms and lockable slam latches.



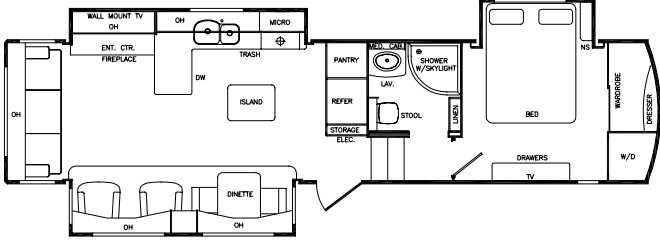
The exclusive StepUp, power 4-step entry, is a revolutionary feature that provides added stability in the step, push button control for easy set-up, and eliminates the inconvenience of wrestling the conventional entry steps in/out every time you travel. The powerful twin motors extend/retract the step in seconds and with all the extra welds we have eliminated the "sag" effect seen on other 4-step entry's.



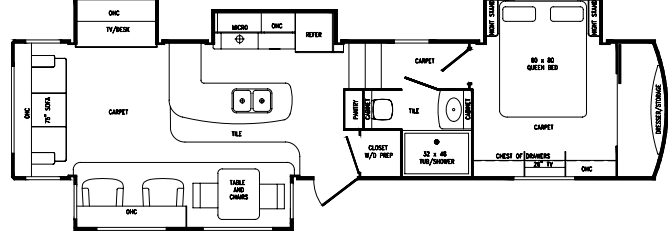
**340RES** Length 36' 1" • Dry Weight 11,725# • Dry Pin Weight 2,950#



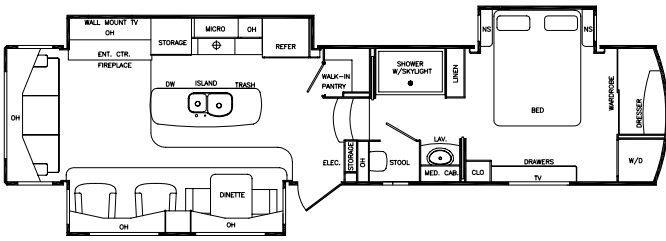
**360RSS** Length 37' 1" • Dry Weight 11,850# • Dry Pin Weight 2,875#



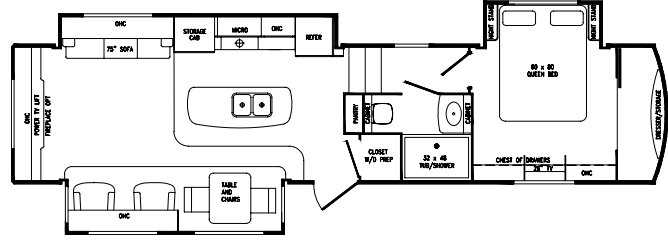
**365LKS** Length TBD • Dry Weight TBD • Dry Pin Weight TBD



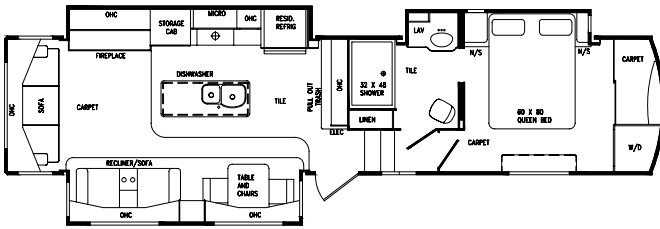
**370TKS** Length 38' 3" • Dry Weight 11,850# • Dry Pin Weight 2875#



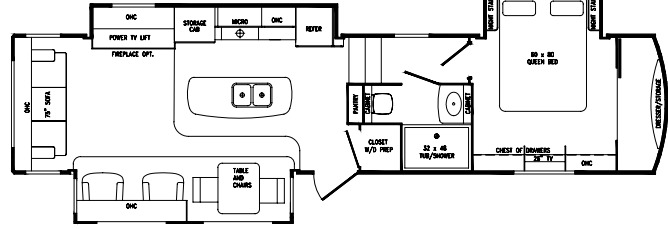
**375KPS** Length TBD • Dry Weight TBD • Dry Pin Weight TBD



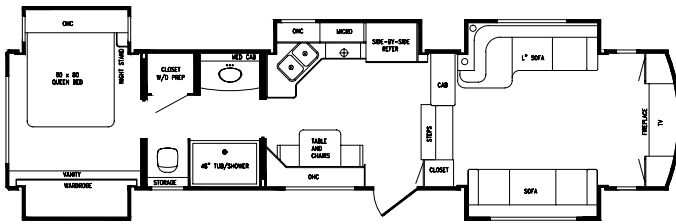
**380RES** Length 38' 3" • Dry Weight 11,850# • Dry Pin Weight 2,875#



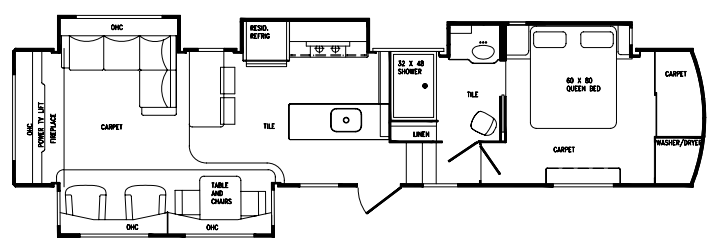
**384RSS** Length TBD • Dry Weight TBD • Dry Pin Weight TBD



**385RSS** Length 38' 3" • Dry Weight 11,850# • Dry Pin Weight 2,875#



**390FLS** Length 39' 3" • Dry Weight 13,125# • Dry Pin Weight 2,825#



**390RESS** Length TBD • Dry Weight TBD • Dry Pin Weight TBD

*Coach lengths measured from front pin box to rear bumper.*



0160 W 750 N • PO Box 235  
Howe, IN 46746

Factory tours by appointment,  
please call for specifics 260-562-1075

www.drvsuites.com



This brochure is based upon the latest product information available at the time of printing. Drv reserves the right to make changes at any time to prices, colors, materials, equipment, specifications and models, and to discontinue models without notice or obligation. Color representations are as close as photographic/print reproduction will allow. All specifications are approximate and dimensions nominal. Text and/or photos may represent equipment or décor items which may not be included as a standard item in your model of choice. © 2014 Drv • 01/25/14