

# TRADITION



*standard exterior*

*optional full  
body paint*

[www.drvsuites.com](http://www.drvsuites.com)

*Create Yours Today*





380RES shown in Stormy Cove

# TRADITION

Designed from the ground up, DRV has incorporated the proven engineering and attention to detail that has built our long standing reputation of excellence. The streamlined roof design and a barrel ceiling has increased the height and created taller slides. The living room has large windows, indirect lighting, leather furniture, fireplace and a power lift TV. Also, you'll enjoy the large residential fiberglass shower.



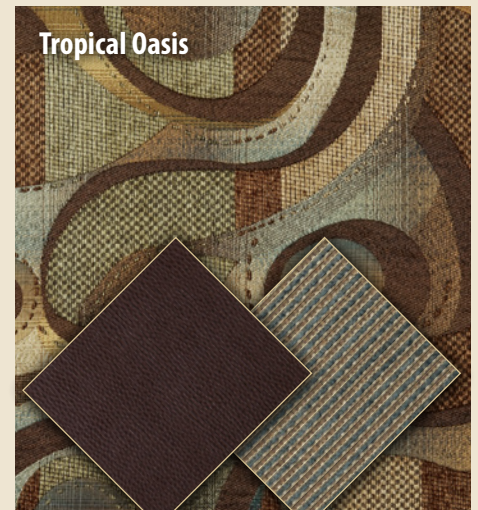
Autumn Spice



Stormy Cove



Tropical Oasis







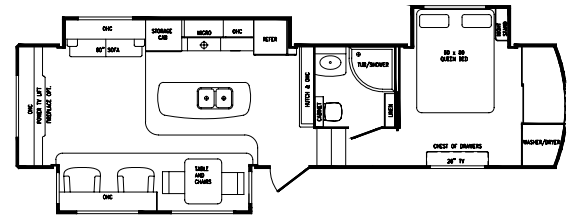
The warm appeal of cherry stained hardwood cabinetry combined with the LG solid surface countertops and lots of pantry space define this kitchen. The cabinetry has concealed hinges and hardwood stiles, and the island adds valuable workspace and features a double stainless steel deep basin sink with a residential style pullout faucet.



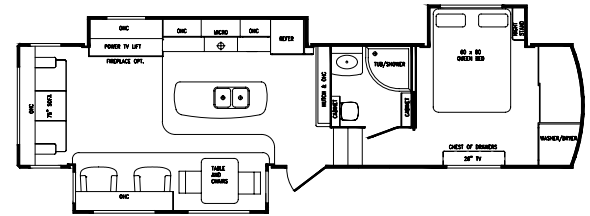
A queen size bed with a pillow-top mattress provides lots of comfort, while the convenience of the spacious built-in dresser and well designed wardrobe accommodate your extended travel.



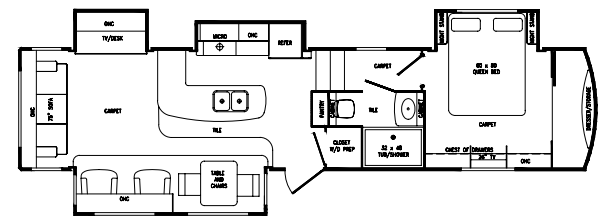
# ALL NEW for 2013!



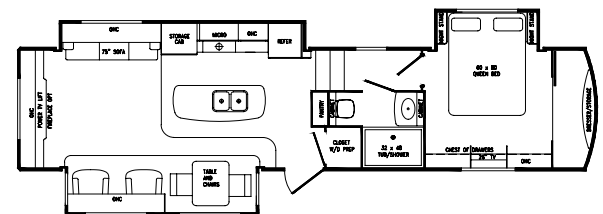
340RES



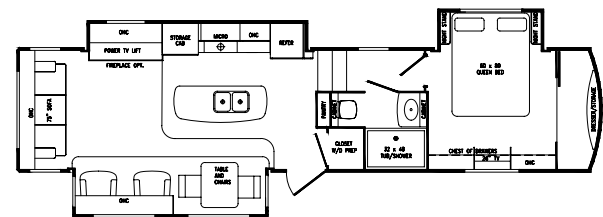
360RSS



370TKS



380RES



385RSS

Experience the  
**ALL NEW**  
**TRADITION**  
 by DRV

## Standard Features

### Interior:

- Domed Interior Roof Design
- Recessed Halogen Pot Lights Throughout
- Increased Slide Out Heights w/ Larger Windows
- Residential Height Cabinetry
- Shaw Residential Carpet
- Residential Grade Linoleum Floor Covering
- Rebond Carpet Pad
- Cherry Stained Custom Cabinetry
- Hardwood Fascia Trim Around Slide Outs
- Indirect Lighting above Cabinetry
- Luxury Valance Design w/ Leather Accent
- Oil Rubbed Bronze Hardware & Fixtures Throughout
- Concealed Hinges On All Cabinet Doors
- Metal Roller Bearing Drawer Guides w/ Full Extension
- Privacy Night Shades On All Windows
- Howard Miller Wall Clock

### Interior/Living Room:

- Fireplace w/ LED Lighting & Wireless Remote
- Power Lift TV
- 40" HD LCD Television w/ DVD Player & 5.1 Surround Sound System
- Leather Wall Hugger Recliners
- Leather Sofa w/ Hide-A-Bed Mattress
- Overhead Cabinetry
- Pull-Out Drawer Above Fireplace (380RES)

### Interior/Kitchen:

- Whirlpool Microwave
- Amana 3-Burner Cooktop w/ Gas Oven
- 13cu.ft. Black Stainless Steel Refrigerator
- Double Deep Bowl Stainless Steel Sinks
- Floor To Ceiling Pantry w/ Adjustable Shelves
- Custom Multi-Function Pantry w/ Pull-Out Drawers & Appliance Tray (some models)
- Custom Pull-Out Hardwood Desk w/ Power Strip (some models)
- LG Solid Surface Countertops
- LG Solid Surface Cooktop Covers

## Tradition Options

- Fantastic Fan w/ Wall Switch In Kitchen
- Fantastic Fan w/ Wall Switch In Bathroom
- Louisiana Carpet Cut
- GE Profile Convection Microwave
- Cooktop Only w/3 Drawers
- New England Cherry Folding Chairs (2)
- King Bed

- Residential Kitchen Faucet w/ Pull-Out Sprayer
- Backsplash Design w/ glass Tile Inserts
- Double Spice Rack
- Pendant Lighting Over Dinette and Island
- Hardwood Dinette Table w/ Wood Pedestal
- Extra Large Dinette Chairs w/ Seat Spring Support (2)
- Tradition Picture Frame

### Interior/Bath:

- LG Solid Surface Countertops
- Sink Vanity w/ Bank of Drawers
- Medicine Cabinet w/ Mirrored Front
- Shower Skylight
- 48" Fiberglass Shower (some models)
- Fiberglass Corner Shower (some models)
- Residential Commode w/ Spray Assist
- Fantastic Fan Create-A-Breeze

### Interior/Bedroom:

- Queen Size Bed w/ Pillow Top Mattress
- Night Stand
- 110V Outlets On Each Side of Queen Bed
- Wood Dresser w/ 6-Drawer Storage
- 6'7" Center Bedroom Height
- Walk-In Front Wardrobe w/ Built In Hardwood Dresser
- 26" HD LCD Bedroom TV w/ Speakers
- Wired & Ducted for Second Bedroom A/C
- Separate A/C Bedroom Thermostat Control

### Frame/Axles/Running Gear:

- 12" I-Beam Frame (96" Wide)
- Twin 7000lb E-Z Lube Axles
- 16" E-Rated Tires
- 12 x 2 Electric Drum Brakes
- Aluminum Rims w/ 8 lug bolts
- Spare Tire & Carrier
- Trailair® EquaFlex Suspension
- Extended Heavy Duty Pin Box
- Levelup (6-Jack Hydraulic Leveling System)
- 1-Touch Automatic Leveling

- Tub/Shower Combo
- 15K BTU Ducted A/C (Bedroom)
- Heat Pump For A/C
- Generator Prep
- Onan 5500 LP Marquis Gold Generator
- 40lb LP Bottles
- Water Filtration System
- Splendide 2-Piece Front Load Washer/Dryer

## Systems:

- 50amp Service w/ Detachable Cord
- Copper Water Manifold System
- Pex Water Lines
- Washer/Dryer Prep
- 10gal. DSI Gas/Electric Hot Water Heater
- Single Lever Water Heater Bypass Valve
- Dual 30lb Propane Bottles
- 15K BTU Main A/C
- Bedroom A/C Prep
- Perimeter Ducted A/C Vents w/ Direction Flow Design
- Superior Outside Service Command Center
- Water Pump Control Switch In Outside Command Center
- Dirt Devil Central Vacuum
- Satellite Prep (Roof & Ground Prep)
- HD TV Antenna
- Cable Hookup
- Outside Shower
- 40,000BTU Furnace System w/ Custom Plenum
- Perimeter Heat Ducting in Living Room
- 6" Extra Large Heat Ducts T/O
- Heated Bathrooms
- Heated & Enclosed Holding Tanks
- 12V Heavy Duty Battery
- Battery Disconnect
- 55amp Power Converter
- Industrial Hydraulic System (Slides & Jacks)
- Electric Bedroom Slide

## Holding Tanks:

- 100gal. Fresh Water Tank
- 90gal. Grey Water Tank
- 45gal. Black Water Tank

## Exterior:

- Power Electric Awning w/ Weather Shield
- Outside Docking Lights
- Scare Lights
- Step Light
- Over The Door Exterior Porch Light
- Expanded Front Storage Compartment

- Trailair® Air Ride Pin Box
- Goodyear 16" G-Rated Tire Upgrade (Including Spare)
- Kodiak Disc Brake Package (Includes 8000lb Axles)
- 2" Utility Hitch w/ 4 Way Flat Plug
- 4-Step Entry
- Slide Toppers (Triple Slide)
- Slide Toppers (Quad Slide)

- Slam Door Latch System On All Exterior Doors
- Extra Thick Baggage Compartment Doors On Gas Struts
- Washable Storage Compartment Liner
- Recessed Exterior Running Lights
- Molded In Rear Lights
- LED Docking Lights Under Front Cap
- Exterior Grab Handle
- High Gloss Gelcoat Exterior Fiberglass
- Custom Colored Exterior Graphic Package w/ Partial Paint
- Frameless Thermopane Windows
- Straight Roof Line Exterior Profile
- Automotive Style Molded Front & Rear Caps
- One Piece Rubber Roof
- 78" Gelcoat Fiberglass Exterior Entry Door
- Ladder

## Construction:

- 16" O.C. Aluminum Stud Construction on Walls, Slides, and Roof
- 14" O.C. Aluminum Stud Construction on Floor
- Hung Sidewall & Slide Out Wall Construction
- Mechanically Fastened (Screwed & Glued) Floor, Wall & Slide Out Aluminum Cage Construction
- NO Lamination In Our Build Process
- Subzero Thermo-Pack High Density Insulation
- R11 Wall Insulation
- R11 Slide Out Wall Insulation
- R29 Floor Insulation
- R25 Roof Insulation
- 5/8" Tongue & Groove Plywood Flooring
- 3/8" Plywood Roof Overlayment
- 2 1/4" Thick Sidewalls & Slide Out Construction
- 1/4" Monsanto Foam-Core Vapor Barrier In Walls & Slide Out Walls

## Coach-Net®

EMERGENCY ROADSIDE ASSISTANCE is provided with purchase of each Suite

- Heat Pads On Holding Tanks w/ Elbow Heaters
- Full Body Paint w/ Clear Coat
- Winegard Traveler Series Satellite for Direct TV
- RVIA Seal
- CSA (Canadian Units Only)



0160 W 750 N • PO Box 235  
Howe, IN 46746  
260-562-1075

www.**drvsuites**.com

facebook

twitter

This brochure is based upon the latest product information available at the time of printing. Drv reserves the right to make changes at any time to prices, colors, materials, equipment, specifications and models, and to discontinue models without notice or obligation. Color representations are as close as photographic/print reproduction will allow. All specifications are approximate and dimensions nominal. Text and/or photos may represent equipment or décor items which may not be included as a standard item in your model of choice.