

*Dream
the
Finer
Things*

DOUBLETREE RV



Elite Suites 36TK3



Select Suites

Mobile Suites

Elite Suites

Your suite awaits you...

www.doubletreervsuites.com



The time is right, you've made the decision to ...

Dream the Finer Things

DoubleTree RV promises and delivers on what today's extended-stay travelers and full-time fifth wheel residents demand most. Efficient designs that combine an abundance of quality features, reliable and innovative engineering with comfortable, beautiful décors, invite sincere compliments. Whether your choice is Elite Suites, Mobile Suites or Select Suites, you can be confident that you've chosen the very best.



Sophistication



Luxurious Comfort



Refined Elegance

Wherever You Travel





ELITE SUITES

Take a close look

... we've left nothing to the imagination. You know that underneath it all we've combined quality features and innovative engineering that delivers a superior extended travel experience.

Sandy beaches,
coastal sunsets,
special times
to remember
as you...

*Dream
the
Finer
Things*



ELITE SUITES

Custom styled woodwork and overhead cabinets are exclusively made for the Elite Suites.

Black granite countertops and the matching look of black finish appliances contrast beautifully with the rich look of handrubbed maple cabinetry.



The King Sleep System (patent pending) features an innerspring bed base, Qualux Comfort mattress, optional power lift system and lift assist under-bed storage space.

Elite Suites 36TK3



Relax in plush dual recliners as you watch your optional 40" LCD HDTV complete with attractive glide-a-way tambour doors. For quieter times the optional built-in electric fireplace offers warmth and a relaxing atmosphere. (as shown on page 5)

Mirrored doors on gliding tracks conceal cedar lined wardrobe space. A built-in shoe rack is available in some models.

The slide-a-way vanity mirror reveals a dual shade system. A light filtering or room darkening shade provides privacy and optimal viewing of the optional LCD TV.



The bedroom vanity and cabinetry feature a solid wood countertop and plenty of drawers with heavy duty glides.



Elite Suites 36TKSB3

Optional Exterior Full Body Paint with Window Silks

Entertaining guests is a real pleasure and will prove to be a memorable event in your Elite Suites.

Residential grade Congoleum floor covering and high durability nylon carpet add comfort and easy care convenience to your extended stay travel. The dining table with extension includes four chairs with under-seat storage.



Décor Selections

The Look of Refined Elegance



To appreciate the true metallic nature of these rich automotive colors see your DoubleTree dealer for accurate paint samples.

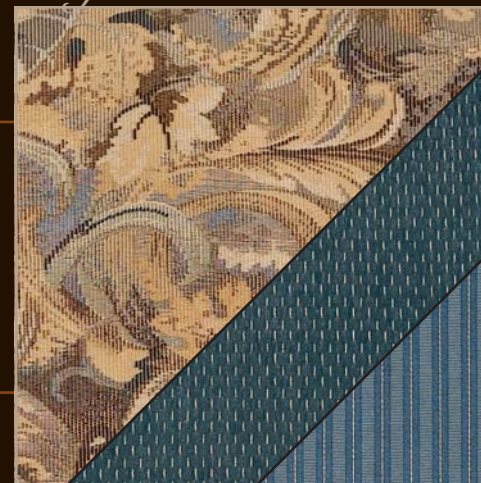
Maple
(standard)



Oak
(optional)



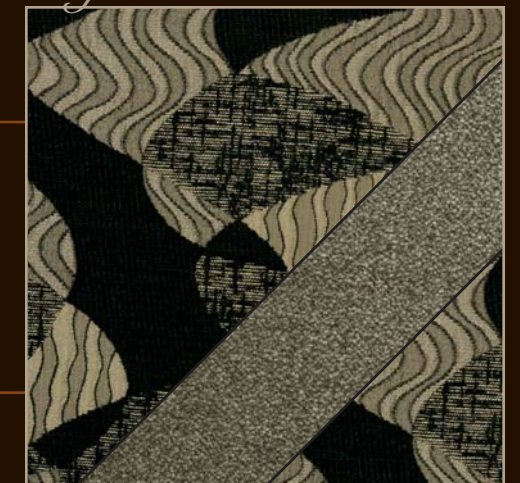
Majestic Blue



Olive Plum



Onyx





MOBILE SUITES

You've arrived

... all the finer things you've dreamed of are right here. You deserve the dignified elegance of the DoubleTree Mobile Suites. Engineered for dependability and designed for lasting beauty, Mobile Suites is every bit as sophisticated as you are.



Enjoy the links of Michigan in summer and the greens of Georgia in winter as you...

*Dream
the
Finer
Things*



MOBILE SUITES

Everywhere you look you'll find quality innovations and aesthetic beauty. It's not just what you see that sets DoubleTree RV ahead, it's what you don't see. Superior structure, automotive technology as well as quality control are engineered into each and every Mobile Suite.



Mobile Suites 36TK3

Optional leather. There's nothing like it. Push back in your deluxe recliner and relax.



The classic look of etched smoked glass makes this privacy pocket door to the bed/bath both functional and decorative.



Before retiring to the luxury of your king, or optional queen size bed, relax in this suite's one-piece fiberglass shower with custom radius shower door. The shower also features a skylight with privacy shade.

Plenty of additional under-bed storage space is easily accessed with the aid of power gas lift arms.



This bedroom includes a cedar lined wardrobe, slide-a-way vanity mirror, day/night shade system and an optional LCD HDTV. A built-in shoe rack is available in some models.





Mobile Suites 36TK3 (Oak)



Mobile Suites 38RL3

Your personal home entertainment theatre awaits, featuring dual privacy pocket doors and an optional 40" LCD HDTV with surround sound system.



Breakfast with a view... beautiful!

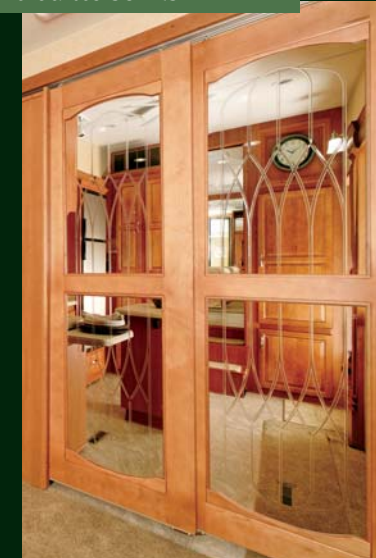


DoubleTree's Premium Surround Sound Package puts you in control from anywhere in the suite.

- Samsung LCD HDTV (32" or 40")
- Sony 900 watt home theater system with 5 – 1 surround sound
- Sony five disc DVD/CD player
- IR (infrared) universal remote
- iPod docking station
- CAT5 wiring (Ethernet)
- XM satellite radio ready
- Custom built TV cabinet with lift up TV



Luxury seating with center storage console. (38')



Etched glass doors.



The pop-up counter extension and work island add precious space and storage.

Décor Selections

The Look of Sophistication

Oak
(standard)



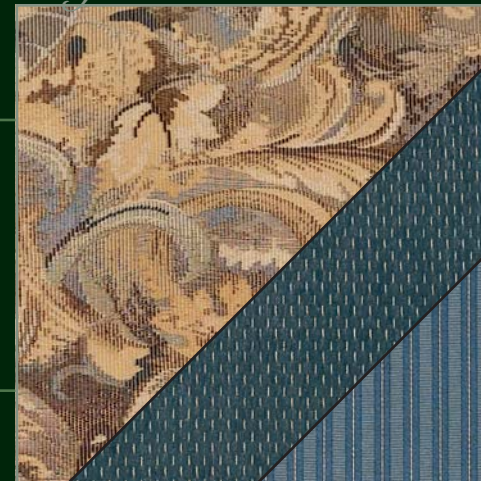
Maple
(optional)



Charcoal



Majestic Blue



Sienna Red



Tuscan Sand





SELECT SUITES

Distinctively different, uniquely DoubleTree.
 See for yourself why Select Suites delivers the features most in demand
 by today's discriminating market.



Surrounded
 by autumn's
 brilliant colors
 you share quiet
 walks and...

*Dream
 the
 Finer
 Things*



SELECT SUITES

Select Suites are designed to showcase residential-style raised panel cabinetry and tastefully coordinated luxurious décors.

Featuring a radius wall as you enter the bedroom, this floorplan provides a spacious side bath.



This kitchen, shown in oak, has dual deep basin sinks and the contemporary look of brushed stainless steel on the optional four door large capacity refrigerator/freezer.



Select Suites 34RLSB3

A spacious side bath is featured in several floorplans.



A matching optional combination convection microwave and a cleverly concealed slide-out spice rack are located above the range and oven. Raised panel custom oak cabinetry with decorative trim and molding create a look of distinction.



Drop-front cabinet creates desk and deep space storage.



The optional 32" integrated LCD HDTV swivels to optimize your viewing pleasure, with cabinet space for electronic components located above. Easy access to hidden storage shelf located behind the TV is an added bonus.



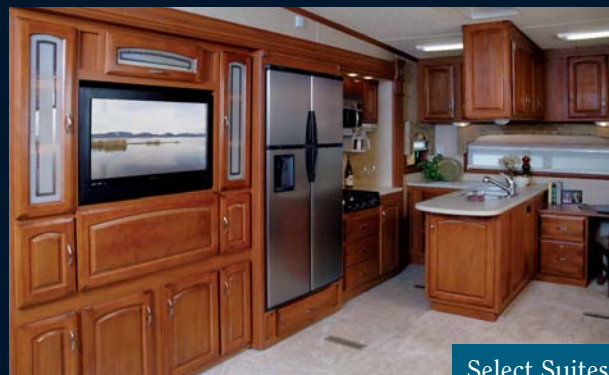
The convenient hall wardrobe offers the option of a washer/dryer. The king size pillow top mattress assures you a good night's rest. Overhead cabinets have lights and soft ambient mood lighting.



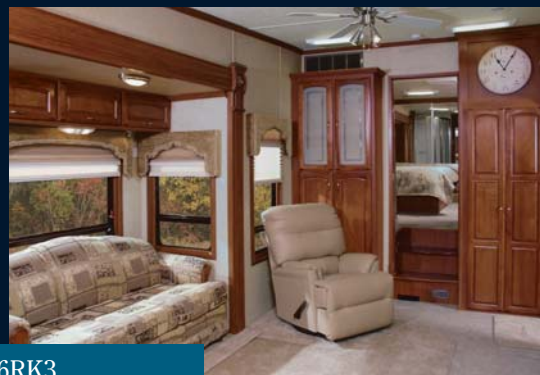
Select Suites 31RL3



Select Suites 36TK3

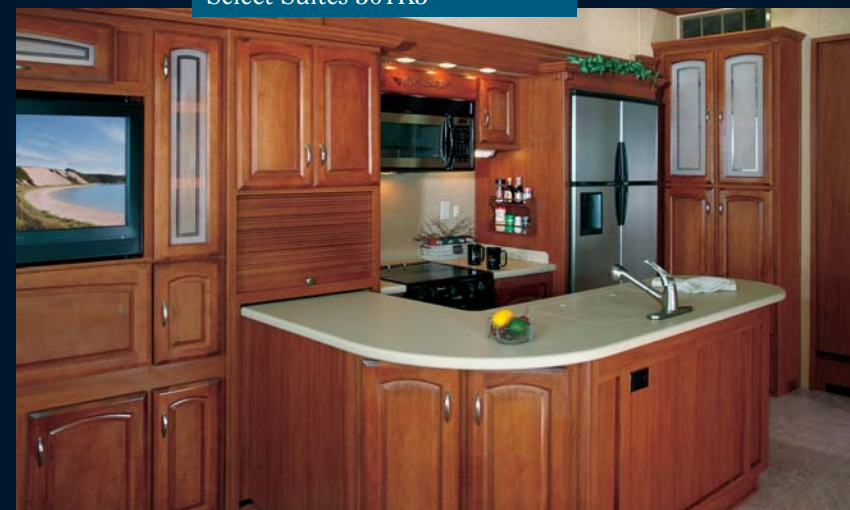


Select Suites 36RK3



These beautiful décors make mealtime or just curling up with a good book seem like a special event.

The spaciousness of the rear kitchen design is exceptional. You'll love the rich hues of Cherry cabinetry accented by decorative frosted glass curios and pantry doors.



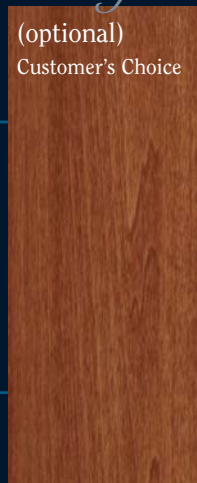
From the comfort of the beautifully upholstered hide-a-bed sofa, and the optional leather recliners, you'll enjoy the view both inside and out. Wide windows will showcase the scenery wherever you travel. Décor coordinated valences and pleated shades complete the look. The optional Hi-Lo coffee table extends to a perfect height for a snack or use of your laptop computer.

A spacious kitchen island offers plenty of workspace and has a solid surface countertop and pull-out residential faucet.

Décor Selections

The Look of Luxurious Comfort

Cherry
(optional)
Customer's Choice



Oak
(optional)
Customer's Choice



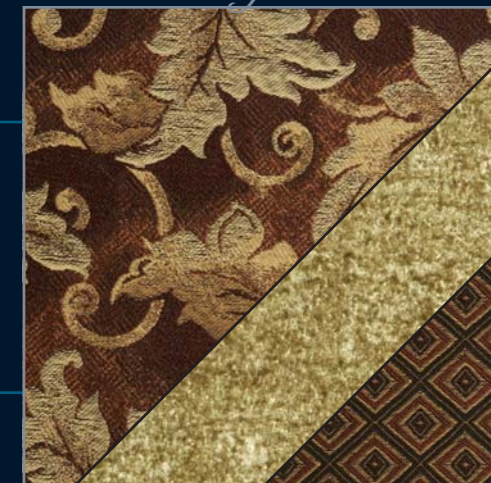
Brilliant Black



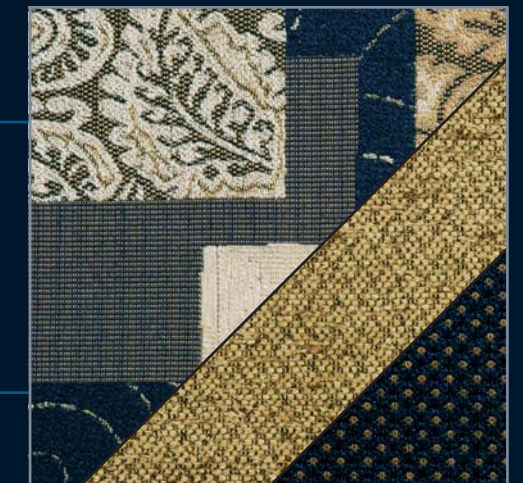
Caramel



Rustic Rouge



Windsor Blue



Innovative Standards and Options – Sure to Enhance Your Extended-Stay Travel

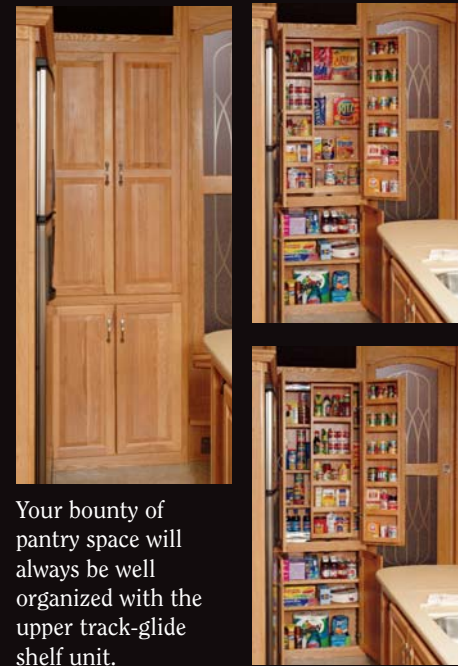
STANDARDS – Select Suites – Mobile Suites – Elite Suites

- King bed with 72" x 80" Qualux mattress and innerspring bed base
- ▲ King 72" x 80" Pillow top mattress
- Queen Bed Suite (32')
- ▲ Custom wood counter on bedroom vanity
- Built in fold down clothes hamper
- Built in floor safe
- ▲ Cedar front closets
- Hardwood oak custom cabinets
- Custom hand rubbed hardwood maple interior trim package
- ▲ Cherry or oak custom cabinets
- Residential type bathroom fan (N/A side bath)
- Create-a-breeze fan in bathroom
- ▲ Heat and A/C duct to toilet room
- Convenience package: (Coffee maker, hair dryer and dustbuster)
- Washer/dryer prep
- ▲ One piece radius fiberglass shower
- ▲ Custom radius shower door
- ▲ Skylight in shower
- Custom acrylic lavatory top with residential faucet
- Custom granite lavatory top with residential faucet
- Removable step carpet pads
- Granite non skid steps
- Custom acrylic kitchen countertops
- Custom granite kitchen countertops
- Recessed solid surface range cover
- Recessed power granite range cover
- ▲ Bi-fold range cover
- ▲ Pull out kitchen faucet
- ▲ Full extension roller bearing drawer guides
- ▲ Residential table with 12" extension with four under seat storage dinette chairs
- ▲ Sliding table with four under seat storage dinette chairs
- ▲ Residential grade Congoleum floor covering
- ▲ Lighted pantries and kitchen island toe kicks
- ▲ Fluorescent light package
- Recessed lighted decorative wall clock
- Decorative wall clock
- Large recessed halogen lights with dimmer switch
- ▲ Utility closet
- ▲ Interior ceiling fan
- ▲ Fabric reclining/glider chair(s)
- ▲ Fabric chair(s)
- Theater seating (38')
- Large 92" hide-a-bed sofa
- ▲ Hide-a-bed sofa with side tables
- ▲ Day/night shades
- ▲ Custom high durability residential carpet w/rebound pad
- ▲ Dometic residential style stainless steel refrigerator
- Dometic residential style black stainless steel refrigerator
- Three burner cook top with over the range GE convection/microwave oven
- ▲ Three burner range with gas oven
- ▲ Microwave oven
- ▲ Brushed nickel lights, cabinet hardware and ceiling fan
- Oil rubbed light fixtures and cabinet hardware
- ▲ Suburban 12 gal. gas/elec. DSI water heater
- Residential heating system
- Suburban 42,000 BTU furnace
- Dometic 15,000 BTU low profile A/C
- ▲ Dometic 15,000 BTU A/C
- ▲ Wired and ducted for second A/C
- ▲ 50 amp service with detachable cord
- Speaker jacks, 110 volt and 12 volt outlet and TV hookup in basement storage
- 80 amp 12 VDC converter
- ▲ 55 amp 12 VDC converter
- ▲ 12 VDC battery
- ▲ 120 VAC duplex receptacle at hook-up center
- ▲ Cable TV/phone ready
- Internet ready
- Power TV antenna
- ▲ TV antenna
- ▲ Ground satellite ready
- ▲ HD satellite prep to roof
- ▲ No-fuss flush on black water tank
- ▲ Water pump switch at outside hookup center
- ▲ Big step at entry door
- Slide out propane tray with 40 lb. tanks
- ▲ 30 lb. LPG tanks
- ▲ Rear stabilizer jacks
- Hydraulic rear stabilizer jacks
- Pinless, industrial hydraulic front landing jacks at 5 degree outboard angle
- ▲ Industrial hydraulic front landing jacks w/snap pins at 5 degree outboard angle
- ▲ Hydraulic slide outs with select push button controls
- ▲ 15" steel triple box channel frame
- ▲ 12" I-beam frame
- ▲ 5/8" T/G exterior plywood floors
- ▲ 3" aluminum floor with R-7 insulation
- ▲ Twin 8,000 lb. axles with shocks and sealed bearings
- ▲ Twin 7,000 lb. axles with shocks and sealed bearings
- ▲ TrailAir® EquaFlex® rubber equalizer suspension
- Disc brakes
- ▲ 12" x 2" drum brakes
- Heavy duty greaseable suspension
- Goodyear 16" G-rated re-groovable tires (32' and 36')
- Goodyear 17.5" H-rated re-groovable tires with magnum suspension (std. 38' Mobile Suite)
- ▲ 16" E-rated tires
- ▲ 8 bolt aluminum wheels
- ▲ 3 1/4" sidewalls
- ▲ 1/4" Fome-cor vapor barrier wrapped sidewalls
- ▲ R-13 sidewall, R-23 roof, R-27 floor
- ▲ Gelcoat fiberglass exterior
- ▲ Gelcoat fiberglass exterior door
- ▲ 78" entry door
- Painted exterior graphics
- ▲ Paint and vinyl graphics
- Custom exterior paint package
- Soft-touch vinyl ceiling
- ▲ 1/2" plywood roof decking
- One piece rubber roof
- ▲ Gelcoat fiberglass wrapped roof
- ▲ Four exterior security lights
- ▲ Back-up lights with 50 watt halogen lights
- ▲ Commercial L.E.D. exterior clearance lights
- ▲ Mid-ship turn signal
- ▲ Water filtration system
- ▲ Water manifold system
- ▲ Single lever water heater bypass
- ▲ Solar prep to roof
- ▲ Lend-a-hand grab handle
- ▲ Tinted safety glass windows
- Washable storage compartment liner
- Power A&E awning
- ▲ Coach-Net Emergency Road Side Assistance

OPTIONS – Select Suites – Mobile Suites – Elite Suites

- **DÉCOR**
- Onyx
- Olive Plum
- Majestic Blue
- Charcoal
- Sienna Red
- Tuscan Sand
- ▲ Brilliant Black
- ▲ Caramel
- ▲ Rustic Rouge
- ▲ Windsor Blue
- **WOOD DECOR**
- ▲ Oak
- Cinnamon Maple
- ▲ Cherry
- **INTERIOR**
- ▲ Coffee table Hi-Lo
- ▲ Leather recliner (2) upgrade
- ▲ Leather recliner (1) upgrade
- ▲ Deluxe fabric recliners
- Convenience package: (blow dryer, coffee maker, dustbuster)
- ▲ Built-in fireplace
- ▲ 92" sofa with air bed and underseat storage
- Air bed for sofa with underseat storage
- **ENTERTAINMENT**
- ▲ 32" Samsung LCD HDTV premium S/S with I/R
- ▲ 40" Samsung LCD HDTV premium S/S with I/R
- ▲ 26" LCD HDTV standard home theatre S/S (31" S.S. or 32" M.S.)
- ▲ 32" LCD HDTV standard home theatre S/S
- ▲ HD dome satellite dish, roof mount

- **KITCHEN**
- ▲ 13 Cu. Ft. four door refrigerator w/water in door and ice maker in freezer
- ▲ Ice maker
- ▲ GE Advantium microwave
- ▲ GE Convection oven
- ▲ 3 burner range/oven IPO 3 burner cooktop
- ▲ 3 burner cooktop w/convection oven
- ▲ Dinette table with extension
- ▲ Extreme smart sensor water pump/filter
- **BATHROOM**
- Tub/shower combo
- ▲ Flip-down shower seat (14" x 14")
- One person infrared sauna ipo w/d prep
- **BEDROOM**
- ▲ 19" LCD HDTV
- Power lift king bed
- ▲ Queen bed suite (standard 32' M.S.)
- ▲ Linen package queen bed
- ▲ Linen package king bed
- ▲ Maple folding chair
- ▲ Oak folding chair
- ▲ Cherry folding chair
- **SYSTEMS / VENTS / FANS**
- ▲ 13.5 BTU ducted Lo/Pro AC (2nd)
- ▲ 15.0 BTU ducted Lo/Pro AC (2nd)
- ▲ Heat pump for 15.0 A/C
- ▲ Create-a-breeze fan in bathroom
- ▲ Fan-Tastic Fan w/ wall switch location: kitchen / bedroom
- ▲ Fan-Tastic Fan w/ rain sensor and wall switch location: kitchen / bedroom
- ▲ Washer/dryer prep (N/A 31RL3)
- ▲ Washer/dryer, stackable (N/A 31RL3 & 36RESB3)
- ▲ Washer/dryer, combo (N/A 31RL3)
- ▲ Central vacuum
- ▲ Generator prep - auto change over
- ▲ Onan 5500 Marquis Gold generator
- ▲ Dual 6V DC heavy duty battery system
- ▲ Xantrex 3000 watt inverter w/ four 6 volt batteries and 2nd compartment
- **CONSTRUCTION / RUNNING GEAR**
- ▲ 16" E-rated spare tire and carrier
- ▲ 16" G-rated spare tire and carrier
- ▲ 17.5" H-rated spare tire and carrier
- ▲ Hydraulic rear stabilizer jacks
- ▲ Monroe gas Magnum shocks
- ▲ 12 1/4" x 3 3/8" self adjusting brakes (Std. 38RD4)
- ▲ Disc brakes
- ▲ Pinless front jacks
- ▲ Trailair C/P susp./air ride pin box tandem
- Magnum suspension, 17.5" H tires and aluminum wheels (standard 38' M.S.)
- ▲ 2" receiver hitch with 4 way flat plug
- ▲ Wireless tire pressure monitoring system
- **EXTERIOR / AWNINGS**
- ▲ Awning w/ aluminum weathershield
- ▲ Awning - power w/ aluminum weathershield & wind sensor
- ▲ Awning - power only
- ▲ Slide topper awnings - Triple slide
- ▲ Slide topper awnings - Quad slide
- ▲ Dinette slide-out patio awning (most models)
- ▲ Slide out storage tray
- ▲ 40# LPG tank upgrade
- ▲ Audible backup camera system
- ▲ Roof rack and detachable ladder
- ▲ Ladder only - no roof rack
- ▲ Thermopane windows (safety glass)
- Window silks
- ▲ Receiver-mounted 3 position bike rack w/ window silks
- ▲ Exterior full body paint (brown or blue)
- ▲ RVIA - rving seal free
- ▲ State seal
- ▲ CSA package



Your bounty of pantry space will always be well organized with the upper track-glide shelf unit.



Extended stay means greater capacity and you'll have it in this residential-style four door refrigerator/freezer featuring easy care stainless steel front.



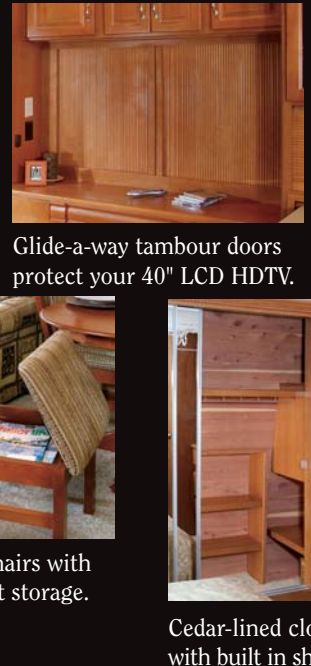
Custom granite countertops have a "power-lift" range cover feature.



Hi-Lo coffee table, the perfect height for your laptop. Storage space too.



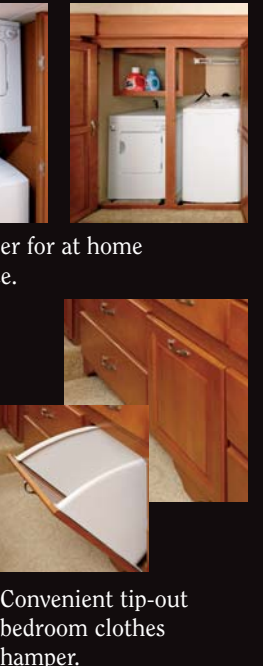
Dinette chairs with under-seat storage.



Cedar-lined closet with built in shoe rack.



Grand RV Sauna™



Convenient tip-out bedroom clothes hamper.

NOTE: Some features shown are exclusive to specific makes and models. Please review the complete Standards and Options list for availability.

DoubleTree RV... New Advances in Engineering Excellence

FEATURES & BENEFITS Step into a DoubleTree RV with confidence. From the ground up, all units are built with automotive style components. Our innovative designs make it easier to transport, set up, and maintain your unit.

Structure

- F:** Professionally designed and tested 15" steel box tube chassis. (Select Suites - 12" I-beam frame)
- B:** Super strong foundation to build a lasting, high quality fifth wheel.
- F:** All-weather heavy duty aluminum floor system.
- B:** The floor is screwed and bolted together and will not rot over time. Also, we do not use staples which eventually work up through the floor covering.
- F:** R-27 insulated frame floor system with three weather barriers.
- B:** Warm floors for extended or full time use; and keeps out condensation.

Technology

- F:** New state of the art industrial hydraulic system.
- B:** Delivers maximum power to operate slide rooms, bed lifts, rear stabilizer jacks, front leveling jacks as well as greater convenience when connecting and disconnecting the fifth wheel.
- F:** New automotive style Kodiak disc brakes.*
- B:** Limited lifetime warranty; smoother stopping; shorter stopping distance; low maintenance cost.
- F:** Heavy duty 8,000 axles with sealed automotive bearings and EquaFlex rubber equalizer.*
- B:** Larger carrying capacity; less axle problems; low maintenance; best ride quality available.
- F:** Heavy duty Goodyear tires and aluminum eight bolt wheels.*
- B:** Highest quality tire manufactured for RV's. Special tread pattern to dissipate heat. Tires are regroovable for miles and miles of safe use. Wheels are light weight and will not rust.
- F:** Greasable suspension with bronze bushings.
- B:** Ease of maintenance and long-wearing.

Sturdy

- F:** 3.25" aluminum framed walls with R-13 insulated rating. Highest R rating in the industry.
- B:** Lightweight; lower heating and cooling cost; noise reduction
- F:** Radiused aluminum roof rafters on 16" centers.
- B:** Lightweight; improved water run off; maximum load capacity per square foot.
- F:** R-23 insulated roof system with plywood and rubber or fiberglass covering.
- B:** Improved weather barrier; sound deadening; low maintenance; lower heating and cooling costs.
- F:** Soft touch interior ceiling.**
- B:** Sound proofing; easy to clean; extra insulation.

Refined

- F:** Conveniently located wall switches control all lighting.
- B:** Fingertip control of all task and decorative lighting.
- F:** Overhead room lighting on dimmer switches.
- B:** Personal light control.
- F:** Designer cabinets throughout the unit.
- B:** Optimal storage and convenience.

Reliability

- New industrial hydraulic jacks.
- High pressure hydraulic lines with metal fittings.
- New individual push button slide room controls.
- New industrial stabilizer jacks located and wind tested to provide maximum stability.
- Heavy gauge UL copper wiring.
- New residential water manifold.
- Convenient lights at all exterior service locations.
- New safe and reliable LED lights.
- Mid unit turn indicator.
- Gel coat fiberglass walls and exterior doors.
- New structural, 36 month warranty.
- 1/2" plywood roof decking.
- Extra sound proofing in floor, walls and roof.
- Engineered back up lights.**
- Tip out tinted safety windows.
- Over sized entry step.
- New automotive disc brakes.
- Pull out battery and LPG bottle trays.**
- Over size basement storage doors with gas lift cylinders.
- Furnace return air replaceable filter.
- New automotive painted exterior graphics.
- Tough skin special coated rock guard.**

*Available Option on Select Suites **Not Available on Select Suites

NOTE: Some features shown are exclusive to specific makes and models. Please review the complete Standards and Options list for availability.



The heating and A/C system, featuring automatic dual zones for comfort, received the "standard of excellence" award for best design and performance. The attractive soft touch ceiling combines durability, sound proofing and an added measure of insulation.



Contemporary design fiberglass rear cap and detachable ladder.



Aerodynamically shaped front fiberglass cap designed for maximum fuel efficiency.



Abundant basement storage for extended living.



DoubleTree RV installs an optional TrailAir® air pin box. Trailair utilizes noise, vibration and harshness testing to engineer a smoother ride and better handling.

Coach-Net
EMERGENCY ROADSIDE ASSISTANCE
is provided with purchase of each Suite

5/8" T/G exterior plywood is glued and screwed to the aluminum floor framing, then bolted to the steel frame.



Aluminum sidewall is bolted to the floor.



3 1/4" thick sidewalls with two moisture barriers and R13 insulation results in increased efficiency of heating/cooling, and better sound insulation qualities.



15" frame depth provides incredible strength as well as space for R27 floor insulation. (Select Suites 12" I-beam frame)

Heavy duty industrial front and rear hydraulic jacks are installed at a 5° angle to provide for maximum stability.



Heavy duty industrial hydraulic pump powers the leveling jacks and sliderooms with independent controls.



Regroovable heavy duty Goodyear® tires and aluminum eight bolt wheels.*



DoubleTree RV cares about your safety... that's why we factory install the Kodiak® automotive style disc brake system* providing for:

- smoother stopping♦
- significantly shorter stopping distances♦
- lower maintenance costs♦

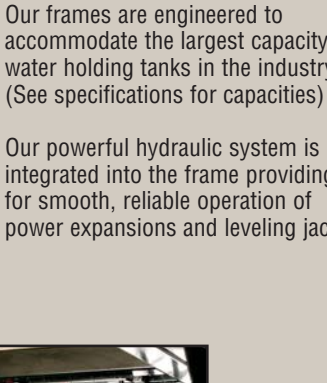
♦When compared to Drum Brakes



Heavy duty steel frame creates a basement for extra thick R27 floor insulation system.



Automotive type 12V A/C wire along with heavy wiring provides all the power to live comfortably in your Suite. A centralized command center allows ease of operation.



Our frames are engineered to accommodate the largest capacity water holding tanks in the industry. (See specifications for capacities)

Our powerful hydraulic system is integrated into the frame providing for smooth, reliable operation of power expansions and leveling jacks.



High strength aluminum welded bow roof rafters accommodate extra thick R23 roof insulation system.



Premium Package Option
Fully integrated infrared control**



Water distribution manifold system for even water flow throughout the Suite. Conveniently select individual lines for easy maintenance.



Conveniently located multi-function hook-up center.



Equa-Flex®, by TrailAir®, smoothes out the rough roads and protects the unit and its contents. (Standard on all units)





SOITC was formed in May of 2006 for the purpose of promoting friendship and exchange of ideas and experiences among its membership. Members of SOITC share the same passion for RV travel and its lifestyle and enjoy the fellowship of families of all ages and professions.

The SOITC is a non-profit, self-sponsored and self-supporting organization that is open to any owner of a Select, Mobile or Elite Suites recreational vehicle made by DoubleTree RV.

For more information please visit our website: www.mobilesuitesrvclub.com



2007 SOITC Rally, Branson, Missouri – America's Best Campground

We Love Our DoubleTree RV...

Just a note to express how happy we are with our new Mobile Suites 36TK3. We had a great tour at the DoubleTree RV Factory. It was very informative and friendly. We purchased our unit in April of 2007 and it's the first trailer we have owned that's been trouble free - been camping all summer. It's very comfortable and we've received many compliments on it. We would recommend this unit to anyone.

Bob and Lou in Ontario Canada

I felt compelled to write and express my appreciation for my 2006 Elite Suites 36TK3. My wife and I tow with a 2006 Dodge one-ton truck and our fifth wheel is equipped with the TrailAir Air Pin Box and Center Point Suspension, it tows like a dream. We chose the Elite Suites because of the attention to detail and design. We so enjoy the comfortable floorplan and quality amenities, we feel like we are home. When we arrive at our destination we feel great and are excited to stay in such luxury.

Dale and Wanda in Columbia, MO

We have lived full-time in our Mobile Suites 36TK3 coach for just over two years and have thoroughly enjoyed the home-like amenities in our home on wheels. The "R" values have made for exceptional comfort in both summer and winter. "Dollar for Dollar" we don't think there is a better fifth wheel currently on the market.

Ron in Granbury, TX

Greetings from my rolling condominium that I call the Snaffle Shack. I continue to be impressed with the construction and design of my Mobile Suites unit. As a AQHA horse show enthusiast I really appreciate the ease of set-up and as a non-mechanical person, except for periodic maintenance, my unit has proven to be hassle free. When we're on the show grounds all day, it's wonderful to know we can always retreat to the convenience and restful comforts of our Mobile Suites coach.

Allen in North Carolina

My Mobile Suites defines the highest standards of RV travel, designed with sufficient storage, for the full-timer as well as the weekender. Comfort combined with beautiful appointments contribute to the homelike atmosphere of my Mobile Suites 36CK3. With the many standard package items included, I would consider this to be the best RV available today.

Tommy in Sonora, TX

Dream the Finer Things





DoubleTree RV - Howe, Indiana

When DoubleTree RV began building Mobile Suites, they used a simple philosophy: find out what the consumers want and exceed their expectations. Attention to detail starts from the ground up.

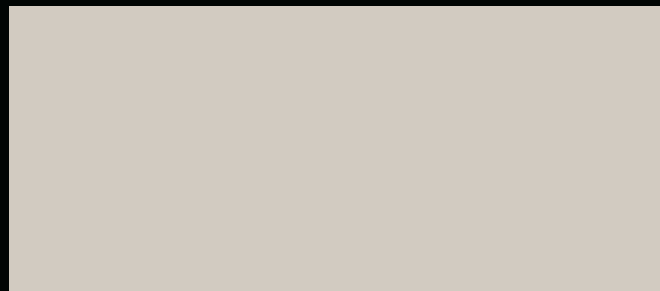
From the heavy duty framework, three extra large holding tanks and 3 1/4" R13 wall framing to the incredibly convenient access to all mechanicals and electronics, DoubleTree RV fifth wheels continue to set the standard for the industry. The 2008 models are exactly what the name says... *suites*. And the best part is, they are built for you.

DoubleTree RV

0160 W 750 N • PO Box 235 • Howe, IN 46746

Reservations: 260-562-1075

www.doubletreervsuites.com



This brochure is based upon the latest product information available at the time of printing. DoubleTree RV reserves the right to make changes at any time to prices, colors, materials, equipment, specifications and models, and to discontinue models without notice or obligation. Color representations are as close as photographic/print reproduction will allow. All specifications are approximate and dimensions nominal. Text and/or photos may represent equipment or décor items which may not be included as a standard item in your model of choice.